

BLAIRGOWRIE YACHT SQUADRON

PETERSVILLE REGATTA

SAILING INSTRUCTIONS

[Click here for quick link to courses](#)

27 - 30 December 2023

Organising Authority
BLAIRGOWRIE YACHT SQUADRON
2900 Point Nepean Road, Blairgowrie 3942, Victoria

1 RULES

- 1.1 The regatta will be governed by the rules as defined in the Racing Rules of Sailing 2021–2024 (RRS).
- 1.2 The prescriptions and special regulation of Australian Sailing Part 1 Category 6 will apply.
- 1.3 All boats shall comply with all relevant legislation and the requirements of all authorities, particularly with respect to the avoidance of commercial shipping.
- 1.4 The AMS rules apply for those who have entered an AMS division.
- 1.5 The ORC rules apply for those who have entered the ORCc division.
- 1.6 The notation '(DP)' in the NOR or SI means that the penalty for a breach of that section may, at the discretion of the Protest Committee, be less than disqualification.
- 1.7 Boats aground. Permission as per RRS 42.3(i) applies.
- 1.8 Blairgowrie Safe Boat Harbour Rules apply for the period of the regatta. These rules can be viewed at http://www.petersvilleregatta.com.au/harbour_rules.

2 NOTICES TO COMPETITORS

- 2.1 Notices to competitors will be posted on the official notice board located at ground level of the BYS clubhouse in front of the canteen.
- 2.2 Notices to competitors may also be posted online on the regatta website (www.petersvilleregatta.com.au/notices).
- 2.3 Advice of notices may be sent via SMS to the mobile number registered at the time of entering the regatta. SMS advice will be an abbreviated version of the actual notice to which it refers. Competitors are advised to refer to the full notice, which always takes precedence.
- 2.4 Changes to a boat's mobile number used for SMS advices shall be notified to the BYS Sailing Office before 1500 on 27 December 2023 (refer to NOR for contact details). Changes after this time are at the discretion of the Race Committee.

3 CHANGES TO SAILING INSTRUCTIONS

- 3.1 Any change to the Sailing Instructions will be posted before 0930 on the day it will take effect, with the exception that any change to the schedule of races will be posted by 2100 on the day before it will take effect.

4 SIGNALS MADE ASHORE

- 4.1 Signals made ashore will be displayed on the western halyards of the yardarm adjacent to the main rigging lawn in front of the BYS clubhouse.
- 4.2 When flag AP is displayed ashore, '1 minute' is replaced with 'not less than 60 minutes' in the race signal AP.
- 4.3 When flag Y is displayed either ashore or on a Race Committee Vessel, RRS 40 applies at all times while afloat. This changes the RRS 40.2.
- 4.4 When a signal is displayed over a Division Flag(s), it applies to that division(s) only.

5 SCHEDULE OF RACES

5.1 Cruising Divisions

Date	Cruising Divisions					
	Warning Signal for first division	Race	Course Area	Course Type	Start Area	Finish Area
27 Dec	From 1600	1	Blairgowrie / Sorrento	Twilight Race	Refer Attachment B	BYS Club
28 Dec	From 1130	2	Blairgowrie	Long Course	Refer Attachment B	BYS Club
29 Dec	From 1130	3	Blairgowrie	Short Course	Refer Attachment B	BYS Club
	From 1600	4	Blairgowrie	Twilight Race	Refer Attachment B	BYS Club
30 Dec	From 1130	5	Blairgowrie	Short Course	Refer Attachment B	BYS Club

5.2 Keelboat Cruising Divisions

- 5.3 For On Water starts, to alert boats that a race or sequence of races will begin soon, an orange flag will be displayed from the Race Committee Vessel for at least 5 minutes before a warning signal is displayed. A sound may accompany the raising of the flag.
- 5.4 For the Keelboat Cruising Divisions, the sequence in which each division will start will be determined by the Race Officer and the appropriate division flag will be flown. Competitors should not assume that the sequence will be consistent throughout the regatta.
- 5.5 On the last day of the regatta, no warning signal will be made after 1300 hours.

6 DIVISION FLAGS & RACING PENNANTS

- 6.1 Division Identification flags may be flown from the BYS Yardarm or from an Official Boat under other Race Signal Flags to signify the instruction relates to a specific division.
- 6.2 Individual Racing Pennants may be provided to some or all divisions. If provided, they must be flown from the backstay or running backstay at all times when racing. For boats with no backstay or runner, the Racing Pennant must be flown from a position as close to the stern of the boat as possible and also be visible to other boats or committee vessels. (DP)
- 6.3 The Division flag and Racing Pennants are as follows:

Division	Division flag	Racing Pennant
Keelboat Cruising (Spin) – Div 1	Green/Black	Green
Keelboat Cruising (Spin) – Div 2	Yellow/Black	Yellow
Keelboat Cruising (Spin) – Div 3	White/Black	White
Keelboat Cruising NS	Blue/White Stripe	Blue

7 RACING AREAS

- 7.1 **Attachment A** shows the location of the Start Area for all races.
- 7.2 **Attachment B** shows the **Petersville Finish Line**.
- 7.3 All illustrations are not necessarily to scale.

8 THE COURSES

- 8.1 The tables in **Attachment C** show the courses, including the order in which marks are to be passed, and the side on which each mark is to be left.
- 8.2 The diagrams in **Attachment D** are for illustrative purposes only. Written descriptions of courses take precedence over diagrams. The circled numbers on the course illustrations indicate the order of rounding or passing and do not relate to the mark number or identification.
- 8.3 Competitors should note that the courses have been designed to accommodate boats with a draft of up to 3m.

- 8.4 The course selection will take into account the prevailing tidal conditions when considering the 3m draft requirement. It shall be the responsibility of each competing boat to monitor the water depth.
- 8.5 The depth reference for course design and selection will use Navionics maps. These are available on the Navionics website or the APP: Boating Australia & New Zealand.
- 8.6 The appropriateness of the course selected for any given race when considered against a boat's draft will not be grounds for redress by a boat. This changes RRS 62.
- 8.7 Courses near the South Channel include channel marks as passing marks. Notwithstanding the need to comply with each passing mark, competitors should avoid entering the South Channel when approaching or leaving the Course Area.
- 8.8 Courses may be shortened in accordance with RRS 32.2; however, courses will not be shortened at a passing mark. The Race Officer may advise the fleet by VHF radio (refer SI 29.3) if a shortened course is planned or is in effect.

9 MARKS

- 9.1 Marks are also described in **Attachment C**.

Cruising Divisions and Twilight Races

- 9.2 The Start Mark will be an **Orange** inflatable mark.
- 9.3 The Turning Mark will be a **Pink** inflatable mark.
- 9.4 The Petersville Finish Mark will be a **Black & White Chequered** inflatable mark laid to the north of the normal BYS Finish Mark (BYS 0) – refer Attachment C. Note that BYS 0 is not a mark of any course.
- 9.5 The Sisters Laid Mark (courses 5 & 6) will be an **Orange** inflatable mark
- 9.6 The Point Franklin Laid Mark (course 5) will be a **Pink** inflatable mark
- 9.7 The Collins Bay Laid Mark (course 6) will be an **Orange** inflatable mark
- 9.8 The Rosebud Laid Mark (courses 10, 11, 12 & 14) will be a **Pink** inflatable mark
- 9.9 The Rye Laid Mark (courses 24, 25, 26, 27, 28 & 29) will be an **Orange** inflatable mark
- 9.10 The turning marks in courses 10, 11, 12, 14, 21, 22, 23 laid approximately 200 metres South of South Channel 7, 13, 15, 19 and east of South Channel 23, will be **Orange** inflatable marks.

10 THE START

Signing On

- 10.1 Skippers will receive a unique sign-on link at the regatta registration. Prior to the warning signal of each race, each boat shall sign-on with an accurate crew list using the *sailingresults* regatta sign on link.
- 10.2 Boats not signing on fully or failing to notify the BYS Regatta Office of a crew change may be scored DNC without a hearing. This changes RRS 63.1.

All Divisions

- 10.3 Races will be started using RRS 26.
- 10.4 A boat starting later than 5 minutes after her starting signal will be scored Did Not Start without a hearing. This changes RRS A4 and A5.
- 10.5 Boats whose warning signal has not been made shall avoid the Starting Area during the starting sequence for other races or divisions. (DP)
- 10.6 The starting line will be between a staff displaying an orange flag on the Race Committee Vessel at the starboard end and the course side of the port-end starting mark.

Keelboat Cruising Divisions and Twilight Race Starts

- 10.7 A **Pink** inflatable mark may be laid approximately 0.25–0.5 nm to windward of the starting line and, if laid, will act as a Turning Mark prior to the first fixed mark of the course.
- 10.8 The Turning Mark will be left to either port or starboard as indicated by either a solid red or solid green flag flying from the Race Committee Vessel.

11 THE FINISH

- 11.1 Once a boat has finished, it shall not re-cross her finishing line. This changes RRS 28. (DP)
- 11.2 The finishing line will be between the Day-Glo Orange Post located on the Blairgowrie Yacht Squadron Tower and the course side of the Petersville Finish Mark (refer SI 9.4). When finishing, boats shall pass between the Red Navigation Pile adjacent to the east of the Blairgowrie Safe Harbour Wall and the Petersville Finish Mark. Refer Attachment B.

12 PENALTY SYSTEM

- 12.1 RRS 44.1 is changed so that the Two-Turns Penalty is replaced by a One-Turn Penalty.

13 TIME LIMITS

- 13.1 Time limits for the first boat in each division to finish are as follows:

Division	Course Type	Time Limit
Keelboat Cruising (all)	Twilight Race 1	1900 EDST
Keelboat Cruising (all)	Long Course Race 1	1800 EDST
Keelboat Cruising (all)	Short Courses	180 minutes
Keelboat Cruising (all)	Twilight Race 2	2000 EDST

- 13.2 If no boat has passed the first mark of the course within 45 minutes after her starting time, the race will be abandoned. This changes RRS 32.1. The Turning Mark used in Cruising Divisions and Twilight races is not considered the first mark for the purposes of this section.
- 13.3 Boats failing to finish within 60 minutes (90 minutes for the Keelboat Cruising Division Long Course Race) after the first boat in their division sails the course and finishes will be scored Did Not Finish without hearing. This changes RRS 35, A4 and A5.

14 PROTESTS AND REQUESTS FOR REDRESS

- 14.1 Protest forms are available at the Regatta Office. Protests and requests for redress shall be delivered there within the appropriate time limit.
- 14.2 For each division, the protest time limit is 60 minutes after the last boat has finished the last race of the day, or the Race Committee signals no more racing today, whichever is later.
- 14.3 Notices will be posted in accordance with SI 2 no later than 30 minutes after the protest time limit to inform competitors of hearings in which they are parties. Hearings will be held in the protest room, beginning at the time posted, or in an alternative location as advised.
- 14.4 Notices of protests by the Race Committee or Protest Committee will be posted to inform boats under RRS 61.1(b).
- 14.5 Breaches of instructions 6, 10.4, 10.5, 11.1, 18, 20, 24, 25, 26 and 32 will not be grounds for a protest by a boat. This changes RRS 60.1(a). (DP)
- 14.6 On the last scheduled day of racing, a request for reopening of a hearing shall be delivered:
- (a) within the protest time limit if the requesting party was informed of the decision on the previous day;
 - (b) no later than 30 minutes after the requesting party was informed of the decision on that day.
- 14.7 On the last scheduled day of racing, a request for redress based on a Protest Committee decision shall be delivered no later than 30 minutes after the decision was posted. This changes RRS 62.2.

15 ARBITRATION

- 15.1 RRS Appendix T shall apply.

16 HANDICAPS

- 16.1 Handicaps are as described in Section 9 of the NOR.
- 16.2 The decision of the Organising Authority or their representative on any handicap matter will be final and will not be grounds for requests for redress. This alters RRS 60.1 (b).

17 SCORING

- 17.1 Three races are required to be completed to constitute a series.
- 17.2 When fewer than four races have been completed, a boat's series score will be the total of her race scores.
- 17.3 When four or more races have been completed, a boat's series score will be the total of her race scores excluding her worst score.

18 SAFETY REGULATIONS

- 18.1 A boat that retires from a race shall notify the Race Committee as soon as possible. Boats shall make every effort to inform the Race Committee by radio (refer SI 29.3) before the expiration of the time limit for the race. (DP)
- 18.2 Anchors shall not be carried forward of the stem or with any part outboard, except when anchoring. (DP)
- 18.3 For Keelboat Cruising Division Long Courses (10, 11, 12 & 14) at marks noted ¥, boats shall log their rounding by SMS text their boat name and sail number to **0407 312 336**.

19 AVOIDANCE OF COMMERCIAL SHIPPING

- 19.1 Marine regulations require that boats shall avoid commercial shipping. Boats that find themselves in danger of interfering with commercial shipping may use their engine to avoid interference and will not be penalised under RRS 42, provided that:
- it is used only as necessary to avoid the commercial shipping in question, and;
 - no advantage is gained through its use, and;
 - a declaration containing a complete description of the circumstances is submitted to the Race Committee within the protest time limit.
- 19.2 This changes RRS 42.

20 REPLACEMENT OF CREW OR EQUIPMENT

- 20.1 Substitution of helmspersons or any equipment will be allowed only with the prior written approval of the Race Committee.
- 20.2 Requests for substitution shall be made to the Race Committee at the first reasonable opportunity.

21 MANUAL POWER

- 21.1 RRS 52 is amended to permit powered winches.

22 EQUIPMENT AND MEASUREMENT CHECKS

- 22.1 A boat or equipment may be inspected at any time for compliance with the class rules and/or the sailing instructions. The Race Committee may instruct a boat to proceed immediately to a designated area for inspection by an inspector or measurer. Any boat so instructed shall promptly comply with any such instruction. (DP)

23 OFFICIAL BOATS

- 23.1 Official boats may be marked with a 'Petersville Regatta' flag or a BYS Burgee.

24 EVENT ADVERTISING

- 24.1 Boats shall display event advertising if supplied by the Organising Authority.

25 SUPPORT BOATS

25.1 Team leaders, coaches and other support personnel shall stay outside areas where boats are racing from the time of the preparatory signal for the first division to start until all boats have finished or retired or the Race Committee signals a postponement, general recall or abandonment. (DP)

26 TRASH DISPOSAL

26.1 Trash may be placed aboard support or official boats.

27 HAUL-OUT RESTRICTIONS

27.1 Keelboats are not to be hauled out during the regatta without prior written permission of the Race Committee. (DP)

28 DIVING EQUIPMENT AND PLASTIC POOLS

28.1 Underwater breather apparatus and plastic pools or their equivalent shall not be used around keelboats between the preparatory signal of the first race and the end of the regatta.

29 RADIO COMMUNICATION

29.1 Except in an emergency, a boat that is racing shall not make voice or data transmissions and shall not receive voice or data communications not available to all boats. This restriction also applies to mobile telephones. (DP)

29.2 All boats shall carry a VHF radio, and maintain a listening watch on their division frequency, unless otherwise advised, and on standby for distress on VHF 16. The call sign of Blairgowrie Yacht Squadron is 'Blairgowrie Tower'. For boat starts, the call sign for a Race Committee Vessel will be 'Petersville Start'.

29.3 The radio frequency for each division is as follows:

Divisions	Radio Frequency
Keelboat Cruising Spinnaker	VHF 82
Keelboat Cruising NS	VHF 82

30 PRIZES

30.1 Prizes will be presented in accordance with section 19 of the NOR.

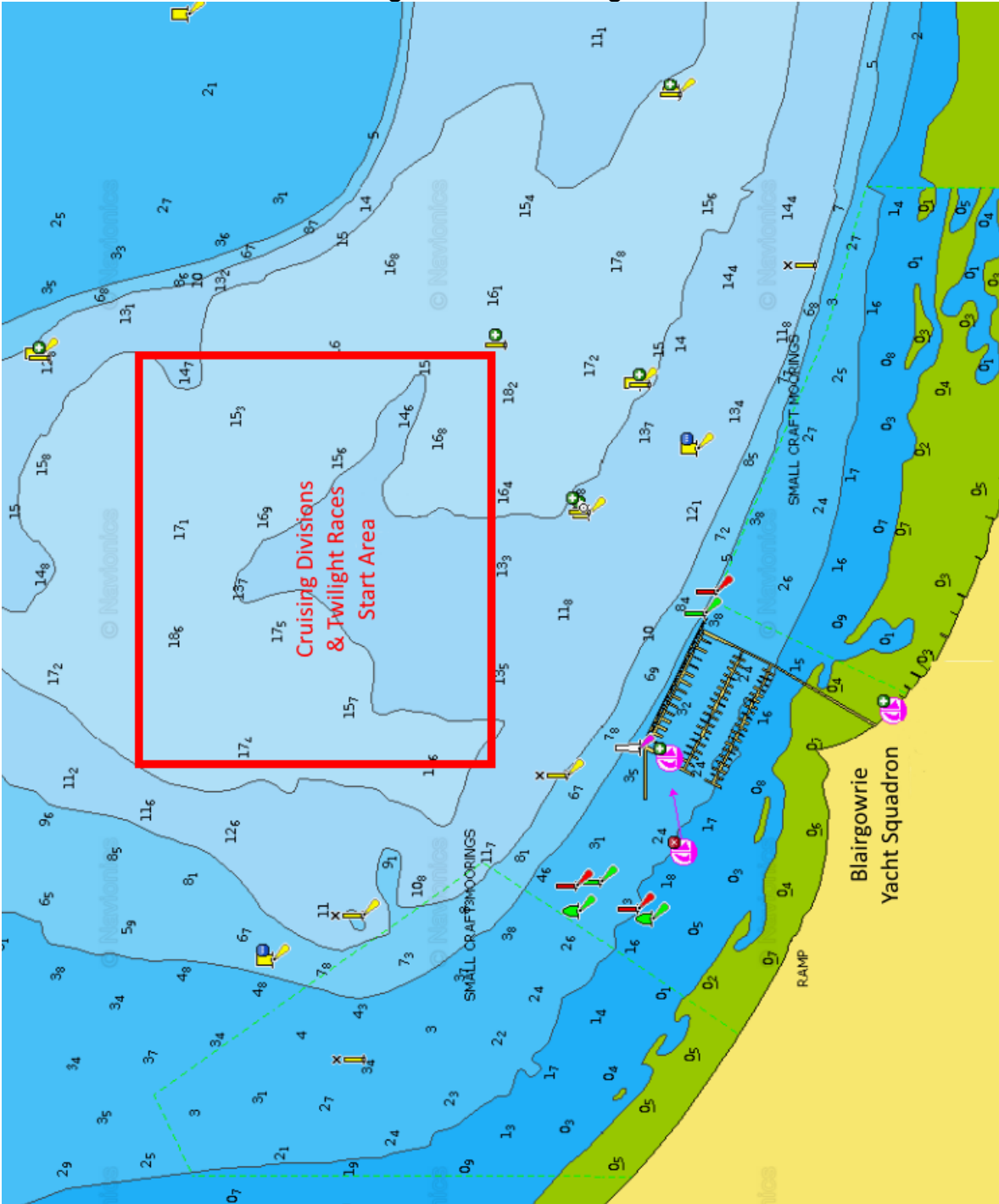
31 DISCLAIMER OF LIABILITY

31.1 RRS 3 states: 'The responsibility for a boat's decision to participate in a race or to continue to race is hers alone.' By participating in this event each competitor agrees and acknowledges that sailing is a potentially dangerous activity with inherent risks. These risks include strong winds and rough seas, sudden changes in weather, failure of equipment, boat handling errors, poor seamanship by other boats, loss of balance on an unstable platform and fatigue resulting in increased risk of injury. Inherent in the sport of sailing is the risk of permanent, catastrophic injury or death by drowning, trauma, hypothermia or other causes.

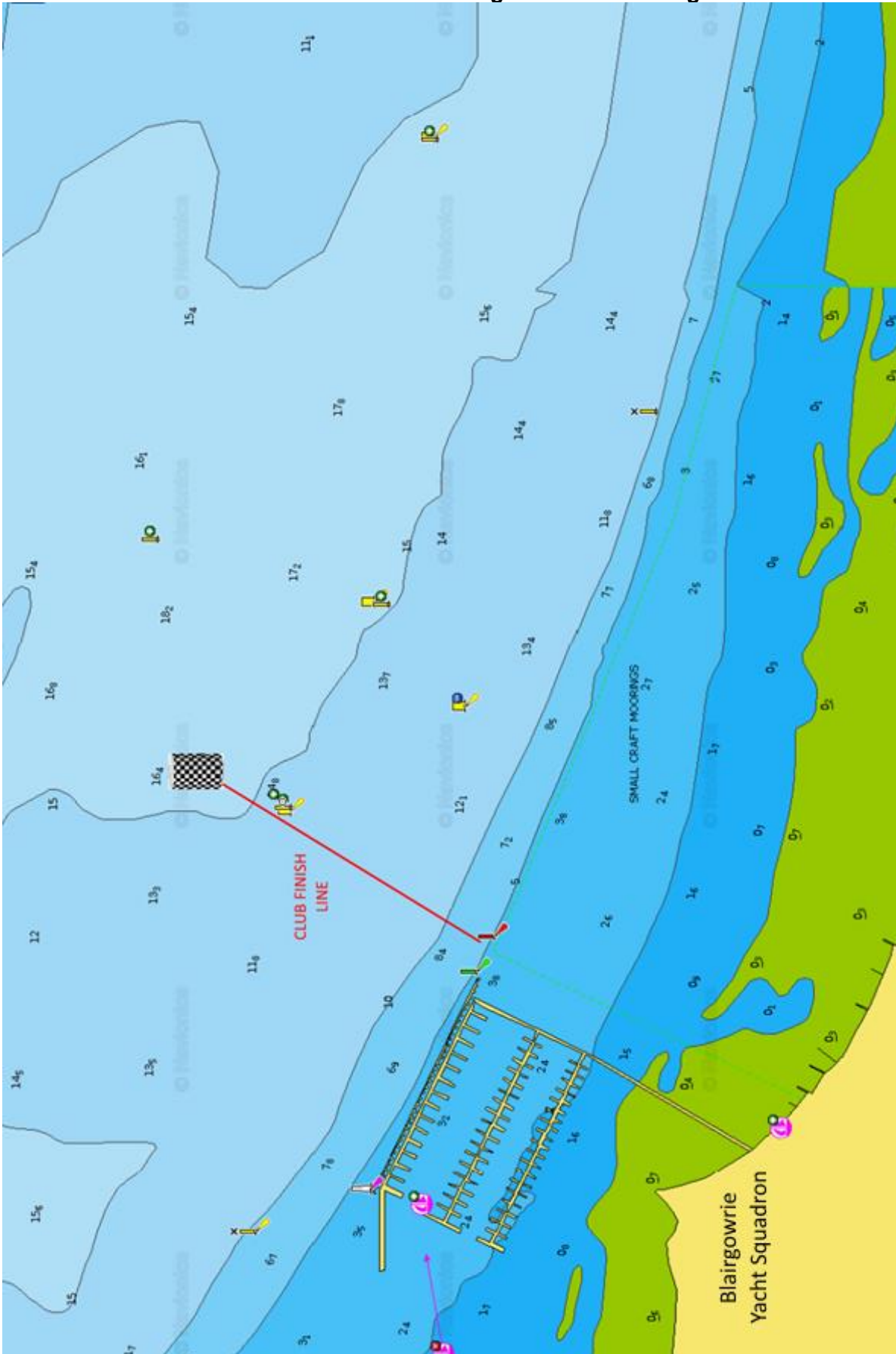
32 INSURANCE

32.1 Each participating boat shall be insured with valid third-party liability insurance with a minimum cover of \$10,000,000.00 per incident or equivalent.

ATTACHMENT A
START AREA – Keelboat Cruising Divisions & Twilight Races



ATTACHMENT B
PETERSVILLE FINISH LINE – Keelboat Cruising Divisions & Twilight Races



**ATTACHMENT C
COURSES – KEELBOAT CRUISING DIVISIONS & TWILIGHT RACES**

- D1 The course will be broadcast on VHF radio (refer SI 29.3) before the warning signal for each division.
- D2 The course to be sailed for each division will be signalled by numeral flags on the Race Committee Vessel and may also be signalled using numeral flags from the BYS yardarm.
- D3 The following course descriptions list the order in which marks are to be passed or the side each mark is to be rounded. Please note: marks denoted * are passing marks.
- D4 A Turning Mark may be specified as the first mark of the course after the start. This mark will be a Pink Inflatable Mark and will be laid approximately to windward of the starting line at a distance of approximately 0.25–0.5 nm from the starting line. The direction of rounding the Turning Mark will be signalled on the Race Committee Vessel – Red for Port rounding, Green for Starboard rounding. If no signal is made, the mark is deleted from the course.

Course 1 – Twilight Course Approx. 8.5NM

COURSE MARK	MARK DESCRIPTION	REQUIRED SIDE
Start Area	On Water Start	
Turning Mark	Pink Inflatable Mark (refer SI 10.7 & 10.8)	** S or P
BYS 3	38°21.015'S, 144°46.115'E	Starboard
BYS 2	38°19.930'S, 144°46.400'E	Port
BYS 3	38°21.015'S, 144°46.115'E	Port
Petersville Finish Mark *	Laid mark as shown in Attachment C	Starboard
BYS 4	38°21.335'S, 144°46.985'E	Port
So.10 *	38°21.337'S 144°47.315'E	Port
So.12 *	38°21.110'S, 144°48.514'E	Port
BYS 6	38°20.630'S 144°49.375'E	Starboard
BYS 5	38°21.610'S 144°49.130'E	Starboard
So. 10 *	38°21.337'S 144°47.315'E	Starboard
BYS 4 *	38°21.335'S, 144°46.985'E	Starboard
Petersville Finish Line	Finish in a westerly direction	

Course 2 – Twilight Course Approx. 7.3NM

COURSE MARK	MARK DESCRIPTION	REQUIRED SIDE
Start Area	On Water Start	
Turning Mark	Pink Inflatable Mark (refer SI 10.7 & 10.8)	** S or P
BYS 3	38°21.015'S, 144°46.115'E	Starboard
BYS 2	38°19.930'S, 144°46.400'E	Starboard
BYS 4	38°21.335'S, 144°46.985'E	Port
BYS 5	38°21.610'S 144°49.130'E	Starboard
BYS 4 *	38°21.335'S, 144°46.985'E	Port
Petersville Finish Line	Finish in a westerly direction	

Course 3 – Twilight Course Approx. 8.5NM

COURSE MARK	MARK DESCRIPTION	REQUIRED SIDE
Start Area	On Water Start	
Turning Mark	Pink Inflatable Mark (refer SI 10.7 & 10.8)	** S or P
BYS 4	38°21.335'S, 144°46.985'E	Port
BYS 5	38°21.610'S 144°49.130'E	Port
BYS 6	38°20.630'S 144°49.375'E	Port
So.12 *	38°21.110'S, 144°48.514'E	Starboard
So.10 *	38°21.337'S 144°47.315'E	Starboard
BYS 4	38°21.335'S, 144°46.985'E	Starboard
Petersville Finish Mark *	Laid mark as shown in Attachment C	Port
BYS 3	38°21.015'S, 144°46.115'E	Starboard
BYS 2	38°19.930'S, 144°46.400'E	Starboard
BYS 4	38°21.335'S, 144°46.985'E	Starboard
Petersville Finish Line	Finish in an westerly direction	

Course 4 – Twilight Course Approx. 7.5NM

COURSE MARK	MARK DESCRIPTION	REQUIRED SIDE
Start Area	On Water Start	
Turning Mark	Pink Inflatable Mark (refer SI 10.7 & 10.8)	** S or P
BYS 4	38°21.335'S, 144°46.985'E	Port
BYS 5	38°21.610'S 144°49.130'E	Port
BYS 4	38°21.335'S, 144°46.985'E	Starboard
Petersville Finish Mark *	Laid mark as shown in Attachment C	Port
BYS 3	38°21.015'S, 144°46.115'E	Starboard
BYS 2	38°19.930'S, 144°46.400'E	Starboard
BYS 4	38°21.335'S, 144°46.985'E	Starboard
Petersville Finish Line	Finish in an westerly direction	

Course 5 – Twilight Course Approx. 8.2NM

COURSE MARK	MARK DESCRIPTION	REQUIRED SIDE
Start Area	On Water Start	
Turning Mark	Pink Inflatable Mark (refer SI 10.7 & 10.8)	** S or P
BYS 3	38°21.015'S, 144°46.115'E	Starboard
Sisters Laid Mark	Orange Inflatable Mark at approx. 38°20.580'S, 144°46.150'E	Port
So.8 *	38°20.217'S, 144°45.307'E	Starboard
So.6 *	38°20.093'S, 144°45.062'E	Starboard
So.4 *	38°19.945'S, 144°44.860'E	Starboard
So.2 *	38°19.500'S, 144°44.653'E	Starboard
So.1 *	38°19.475'S, 144°44.527'E	Port
Point Franklin Laid Mark	Pink Inflatable Mark at approx. 38°18.770'S, 144°43.100'E	Port
So.1 *	38°19.475'S, 144°44.527'E	Starboard
So.2 *	38°19.500'S, 144°44.653'E	Port
So.4 *	38°19.945'S, 144°44.860'E	Port
So.6 *	38°20.093'S, 144°45.062'E	Port
So.8 *	38°20.217'S, 144°45.307'E	Port
Sisters Laid Mark	Orange Inflatable Mark at approx. 38°20.580'S, 144°46.150'E	Starboard
BYS 3	38°21.015'S, 144°46.115'E	Port
Petersville Finish Line	Finish in an easterly Direction	

Course 6 – Twilight Course Approx. 6.7NM

COURSE MARK	MARK DESCRIPTION	REQUIRED SIDE
Start Area	On Water Start	
Turning Mark	Pink Inflatable Mark (refer SI 10.7 & 10.8)	** S or P
BYS 3	38°21.015'S, 144°46.115'E	Starboard
Sisters Laid Mark	Orange Inflatable Mark at approx. 38°20.580'S, 144°46.150'E	Port
So.8 *	38°20.217'S, 144°45.307'E	Starboard
So.6 *	38°20.093'S, 144°45.062'E	Starboard
So.4 *	38°19.945'S, 144°44.860'E	Starboard
So.2 *	38°19.500'S, 144°44.653'E	Starboard
So.1 *	38°19.475'S, 144°44.527'E	Port
Collins Bay Laid Mark	Orange Inflatable Mark at approx. 38°19.090'S, 144°43.870'E	Port
So.1 *	38°19.475'S, 144°44.527'E	Starboard
So.2 *	38°19.500'S, 144°44.653'E	Port
So.4 *	38°19.945'S, 144°44.860'E	Port
So.6 *	38°20.093'S, 144°45.062'E	Port
So.8 *	38°20.217'S, 144°45.307'E	Port
Sisters Laid Mark	Orange Inflatable Mark at approx. 38°20.580'S, 144°46.150'E	Starboard
BYS 3	38°21.015'S, 144°46.115'E	Port
Petersville Finish Line	Finish in an easterly Direction	

Course 10 – Long Course Approx. 15NM

COURSE MARK	MARK DESCRIPTION	REQUIRED SIDE
Start Area	On Water Start	
Turning Mark	Orange Inflatable Mark (refer SI 10.7 & 10.8)	** S or P
BYS 3	38°21.015'S, 144°46.115'E	Starboard
BYS 2	38°19.930'S, 144°46.400'E	Starboard
Laid mark approx. 200 metres south of South Channel 7	Orange Inflatable Mark at approx. 38°19.007'S, 144°47.049'E	Starboard
BYS 2	38°19.930'S, 144°46.400'E	Starboard
Laid mark approx. 200 metres south of South Channel 7	Orange Inflatable Mark at approx. 38°19.007'S, 144°47.049'E	Starboard
South Channel 9 *	38°19.346'S, 144°48.708'E	Port
South Channel 11 *	38°19.492'S, 144°50.083'E	Port
South Channel 13 *	38°19.867'S, 144°51.551'E	Port
Laid mark approx. 200 metres south of South Channel 15	Orange Inflatable Mark at approx. 38°20.023'S, 144°52.501'E	Starboard
Rosebud Laid Mark	Pink Inflatable Mark located 1.0-1.5nm inshore of South Channel 15	Starboard
BYS 5	38°21.610'S 144°49.130'E	Starboard
So. 10 *	38°21.337'S 144°47.315'E	Starboard
BYS 4 *	38°21.335'S, 144°46.985'E	Starboard
Petersville Finish Line	Finish in a westerly direction	

Course 11 – Long Course Approx. 19NM

COURSE MARK	MARK DESCRIPTION	REQUIRED SIDE
Start Area	On Water Start	
Turning Mark	Pink Inflatable Mark (refer SI 10.7 & 10.8)	** S or P
BYS 3	38°21.015'S, 144°46.115'E	Starboard
BYS 2	38°19.930'S, 144°46.400'E	Starboard
Laid mark approx. 200 metres south of South Channel 7	38°19.007'S, 144°47.049'E	Starboard
South Channel 9 *	38°19.346'S, 144°48.708'E	Port
South Channel 11 *	38°19.492'S, 144°50.083'E	Port
South Channel 13 *	38°19.867'S, 144°51.551'E	Port
South Channel 15 *	38°20.023'S, 144°52.501'E	Port
South Channel 19 *	38°20.125'S, 144°54.468'E	Port
South Channel 21 *	38°19.500'S, 144°55.486'E	Port
Laid mark approx. 200 metres East of South of Channel 23 ¥	Orange Inflatable Mark at approx. 38°18.807'S, 144°55.951'E	Starboard
South Channel 21 *	38°19.500'S, 144°55.486'E	Starboard
Rosebud Laid Mark	Pink Inflatable Mark at approx. 38°20.870'S 144°54.420'E	Starboard
BYS 5	38°21.610'S 144°49.130'E	Starboard
So. 10 *	38°21.337'S 144°47.315'E	Starboard
BYS 4 *	38°21.335'S, 144°46.985'E	Starboard
Petersville Finish Line	Finish in a westerly direction	

¥ = SMS boat name and sail number to 0407 312 336

Course 12 – Long Course Approx. 23NM

COURSE MARK	MARK DESCRIPTION	REQUIRED SIDE
Start Area	On Water Start	
Turning Mark	Pink Inflatable Mark (refer SI 10.7 & 10.8)	** S or P
BYS 3	38°21.015'S, 144°46.115'E	Starboard
BYS 2	38°19.930'S, 144°46.400'E	Starboard
Laid mark approx. 200 metres south of South Channel 7	Orange Inflatable Mark at approx. 38°19.007'S, 144°47.049'E	Starboard
South Channel 9 *	38°19.346'S, 144°48.708'E	Port
South Channel 11 *	38°19.492'S, 144°50.083'E	Port
South Channel 13 *	38°19.867'S, 144°51.551'E	Port
South Channel 15 *	38°20.023'S, 144°52.501'E	Port
South Channel 19 *	38°20.125'S, 144°54.468'E	Port
South Channel 21 *	38°19.500'S, 144°55.486'E	Port
South Channel 23 *	38°18.807'S, 144°55.951'E	Port
Mt Martha Marine Farm NW	38°18.182'S, 144°58.337'E	Starboard
Mt Martha Marine Farm NE	38°18.184'S, 144°58.640'E	Starboard
Mt Martha Marine Farm SE ¥	38°18.430'S, 144°58.640'E	Starboard
Rosebud Laid Mark	Pink Inflatable Mark at approx. 38°20.870'S 144°54.420'E	Starboard
BYS 5	38°21.610'S 144°49.130'E	Starboard
So. 10 *	38°21.337'S 144°47.315'E	Starboard
BYS 4 *	38°21.335'S, 144°46.985'E	Starboard
Petersville Finish Line	Finish in a westerly direction	

¥ = SMS boat name and sail number to 0407 312 336

Course 14 – Long Course Approx. 20NM

COURSE MARK	MARK DESCRIPTION	REQUIRED SIDE
Start Area	On Water Start	
Turning Mark	Pink Inflatable Mark (refer SI 10.7 & 10.8)	** S or P
BYS 3	38°21.015'S, 144°46.115'E	Starboard
BYS 2	38°19.930'S, 144°46.400'E	Starboard
Laid mark approx. 200 metres south of South Channel 7	Orange Inflatable Mark at approx. 38°19.007'S, 144°47.049'E	Starboard
South Channel 9 *	38°19.346'S, 144°48.708'E	Port
South Channel 11 *	38°19.492'S, 144°50.083'E	Port
South Channel 13 *	38°19.867'S, 144°51.551'E	Port
South Channel 15 *	38°20.023'S, 144°52.501'E	Port
Laid mark approx. 200 metres south of South Channel 19	Orange Inflatable Mark at approx. 38°20.125'S, 144°54.468'E	Starboard
Rosebud Laid Mark	Pink Inflatable Mark at approx. 38°20.870'S 144°54.420'E	Starboard
Laid mark approx. 200 metres south of South Channel 19 *	Orange Inflatable Mark at approx. 38°20.125'S, 144°54.468'E	Starboard
Rosebud Laid Mark	Pink Inflatable Mark at approx. 38°20.870'S 144°54.420'E	Starboard
Laid mark approx. 200 metres south of South Channel 19 *	Orange Inflatable Mark at approx. 38°20.125'S, 144°54.468'E	Starboard
Rosebud Laid Mark	Pink Inflatable Mark at approx. 38°20.870'S 144°54.420'E	Starboard
BYS 5	38°21.610'S 144°49.130'E	Starboard
So.10 *	38°21.337'S 144°47.315'E	Starboard
BYS 4 *	38°21.335'S, 144°46.985'E	Starboard
Petersville Finish Line	Finish in a westerly direction	

Course 21 – Short Course Approx. 14.5NM

COURSE MARK	MARK DESCRIPTION	REQUIRED SIDE
Start Area	On Water Start	
Turning Mark	Pink Inflatable Mark (refer 10.7 & 10.8)	** S or P
BYS 4	38°21.335'S, 144°46.985'E	Port
So.10 *	38°21.337'S 144°47.315'E	Port
So.12 *	38°21.110'S, 144°48.514'E	Port
BYS 6 *	38°20.630'S 144°49.375'E	Starboard
Laid mark approx. 200 metres south of South Channel 13	Orange Inflatable Mark at approx. 38°19.867'S, 144°51.551'E	Starboard
BYS 6	38°20.630'S 144°49.375'E	Port
BYS 5	38°21.610'S 144°49.130'E	Starboard
BYS 4	38°21.335'S, 144°46.985'E	Starboard
So.10 *	38°21.337'S 144°47.315'E	Port
So.12 *	38°21.110'S, 144°48.514'E	Port
BYS 6	38°20.630'S 144°49.375'E	Starboard
BYS 5	38°21.610'S 144°49.130'E	Starboard
So.10 *	38°21.337'S 144°47.315'E	Starboard
BYS 4 *	38°21.335'S, 144°46.985'E	Starboard
Petersville Finish Line	Finish in a westerly direction	

Course 22 – Short Course Approx. 11NM

COURSE MARK	MARK DESCRIPTION	REQUIRED SIDE
Start Area	On Water Start	
Turning Mark	Pink Inflatable Mark (refer 10.7 & 10.8)	** S or P
BYS 4	38°21.335'S, 144°46.985'E	Port
So.10 *	38°21.337'S 144°47.315'E	Port
So.12 *	38°21.110'S, 144°48.514'E	Port
BYS 6 *	38°20.630'S 144°49.375'E	Starboard
Laid mark approx. 200 metres south of South Channel 13	Orange Inflatable Mark at approx. 38°19.867'S, 144°51.551'E	Port
South Channel 11 *	38°19.492'S, 144°50.083'E	Starboard
South Channel 9 *	38°19.346'S, 144°48.708'E	Starboard
Laid mark approx. 200 metres south of South Channel 7	Orange Inflatable Mark at approx. 38°19.007'S, 144°47.049'E	Port
BYS 2 *	38°19.930'S, 144°46.400'E	Port
BYS 3	38°21.015'S, 144°46.115'E	Port
Petersville Finish Line	Finish in an easterly direction	

Course 23 – Short Course Approx. 16.5NM

COURSE MARK	MARK DESCRIPTION	REQUIRED SIDE
Start Area	On Water Start	
Turning Mark	Pink Inflatable Mark (refer 10.7 & 10.8)	** S or P
BYS 4	38°21.335'S, 144°46.985'E	Port
So.10 *	38°21.337'S 144°47.315'E	Port
So.12 *	38°21.110'S, 144°48.514'E	Port
BYS 6 *	38°20.630'S 144°49.375'E	Starboard
Laid mark approx. 200 metres south of South Channel 13	Orange Inflatable Mark at approx. 38°19.867'S, 144°51.551'E	Port
South Channel 11 *	38°19.492'S, 144°50.083'E	Starboard
South Channel 9 *	38°19.346'S, 144°48.708'E	Starboard
Laid mark approx. 200 metres south of South Channel 7	Orange Inflatable Mark at approx. 38°19.007'S, 144°47.049'E	Port
BYS 2 *	38°19.930'S, 144°46.400'E	Port
BYS 3	38°21.015'S, 144°46.115'E	Port
Petersville Finish Mark *	Laid mark as shown in Attachment C	Starboard
BYS 4 *	38°21.335'S, 144°46.985'E	Port
So.10 *	38°21.337'S 144°47.315'E	Port
So.12 *	38°21.110'S, 144°48.514'E	Port
BYS 6	38°20.630'S 144°49.375'E	Starboard
BYS 5	38°21.610'S 144°49.130'E	Starboard
So.10 *	38°21.337'S 144°47.315'E	Starboard
BYS 4 *	38°21.335'S, 144°46.985'E	Starboard
Petersville Finish Line	Finish in a westerly direction	

Course 24 – Short Course Approx. 11NM

Generally N/S Wind

COURSE MARK	MARK DESCRIPTION	REQUIRED SIDE
Start Area	On Water Start	
Turning Mark	Pink Inflatable Mark (refer SI 10.7 & 10.8)	** S or P
BYS 4	38°21.335'S, 144°46.985'E	Port
So.10 *	38°21.337'S 144°47.315'E	Port
So.12 *	38°21.110'S, 144°48.514'E	Port
BYS 6	38°20.630'S 144°49.375'E	Starboard
Rye Laid Mark	Orange Inflatable Mark located 1.0-1.5nm SOUTH of BYS 6 such that the bearing between BYS 6 & the Rye Laid Mark produces an approximately windward / leeward leg depending on wind direction.	Port
BYS 6	38°20.630'S 144°49.375'E	Port
Rye Laid Mark	Orange Inflatable Mark (refer above)	Port
BYS 6	38°20.630'S 144°49.375'E	Port
So.12 *	38°21.110'S, 144°48.514'E	Starboard
So.10 *	38°21.337'S 144°47.315'E	Starboard
BYS 4 *	38°21.335'S, 144°46.985'E	Starboard
Petersville Finish Line	Finish in a westerly direction	

Course 25 – Short Course Approx. 13NM

Generally N/S Wind

COURSE MARK	MARK DESCRIPTION	REQUIRED SIDE
Start Area	On Water Start	
Turning Mark	Pink Inflatable Mark (refer SI 10.7 & 10.8)	** S or P
BYS 4	38°21.335'S, 144°46.985'E	Port
So.10 *	38°21.337'S 144°47.315'E	Port
So.12 *	38°21.110'S, 144°48.514'E	Port
BYS 6	38°20.630'S 144°49.375'E	Starboard
Rye Laid Mark	Orange Inflatable Mark located 1.0-1.5nm SOUTH of BYS 6 such that the bearing between BYS 6 & the Rye Laid Mark produces an approximately windward / leeward leg depending on wind direction.	Port
BYS 6	38°20.630'S 144°49.375'E	Port
Rye Laid Mark	Orange Inflatable Mark (refer above)	Port
BYS 6	38°20.630'S 144°49.375'E	Port
Rye Laid Mark	Orange Inflatable Mark (refer above)	Port
BYS 6	38°20.630'S 144°49.375'E	Port
So.12 *	38°21.110'S, 144°48.514'E	Starboard
So.10 *	38°21.337'S 144°47.315'E	Starboard
BYS 4 *	38°21.335'S, 144°46.985'E	Starboard
Petersville Finish Line	Finish in a westerly direction	

Course 26 – Short Course Approx. 11NM

Generally E/W Wind

COURSE MARK	MARK DESCRIPTION	REQUIRED SIDE
Start Area	On Water Start	
Turning Mark	Pink Inflatable Mark (refer SI 10.7 & 10.8)	** S or P
BYS 4	38°21.335'S, 144°46.985'E	Port
So.10 *	38°21.337'S 144°47.315'E	Port
So.12 *	38°21.110'S, 144°48.514'E	Port
BYS 6	38°20.630'S 144°49.375'E	Starboard
Rye Laid Mark	Orange Inflatable Mark located 1.0-1.5nm EAST of BYS 6 such that the bearing between BYS 6 & the Rye Laid Mark produces an approximately windward / leeward leg depending on wind direction.	Port
BYS 6	38°20.630'S 144°49.375'E	Port
Rye Laid Mark	Orange Inflatable Mark (refer above)	Port
BYS 6	38°20.630'S 144°49.375'E	Port
So.12 *	38°21.110'S, 144°48.514'E	Starboard
So.10 *	38°21.337'S 144°47.315'E	Starboard
BYS 4 *	38°21.335'S, 144°46.985'E	Starboard
Petersville Finish Line	Finish in a westerly direction	

Course 27 – Short Course Approx. 13NM

Generally E/W Wind

COURSE MARK	MARK DESCRIPTION	REQUIRED SIDE
Start Area	On Water Start	
Turning Mark	Pink Inflatable Mark (refer SI 10.7 & 10.8)	** S or P
BYS 4	38°21.335'S, 144°46.985'E	Port
So.10 *	38°21.337'S 144°47.315'E	Port
So.12 *	38°21.110'S, 144°48.514'E	Port
BYS 6	38°20.630'S 144°49.375'E	Starboard
Rye Laid Mark	Orange Inflatable Mark located 1.0-1.5nm EAST of BYS 6 such that the bearing between BYS 6 & the Rye Laid Mark produces an approximately windward / leeward leg depending on wind direction.	Port
BYS 6	38°20.630'S 144°49.375'E	Port
Rye Laid Mark	Orange Inflatable Mark (refer above)	Port
BYS 6	38°20.630'S 144°49.375'E	Port
Rye Laid Mark	Orange Inflatable Mark (refer above)	Port
BYS 6	38°20.630'S 144°49.375'E	Port
So.12 *	38°21.110'S, 144°48.514'E	Starboard
So.10 *	38°21.337'S 144°47.315'E	Starboard
BYS 4 *	38°21.335'S, 144°46.985'E	Starboard
Petersville Finish Line	Finish in a westerly direction	

Course 28 – Short Course Approx. 10NM

Generally E/W Wind

COURSE MARK	MARK DESCRIPTION	REQUIRED SIDE
Start Area	On Water Start	
Turning Mark	Pink Inflatable Mark (refer SI 10.7 & 10.8)	** S or P
BYS 4	38°21.335'S, 144°46.985'E	Port
So.10 *	38°21.337'S 144°47.315'E	Port
BYS 5	38°21.610'S 144°49.130'E	Port
Rye Laid Mark	Orange Inflatable Mark located 1.0-1.5nm EAST of BY5 such that the bearing between BY5 & the Rye Laid Mark produces an approximately windward / leeward leg depending on wind direction.	Starboard
BYS 5	38°21.610'S 144°49.130'E	Starboard
Rye Laid Mark	Orange Inflatable Mark (refer above)	Starboard
BYS 5	38°21.610'S 144°49.130'E	Starboard
So.10 *	38°21.337'S 144°47.315'E	Starboard
BYS 4 *	38°21.335'S, 144°46.985'E	Starboard
Petersville Finish Line	Finish in a westerly direction	

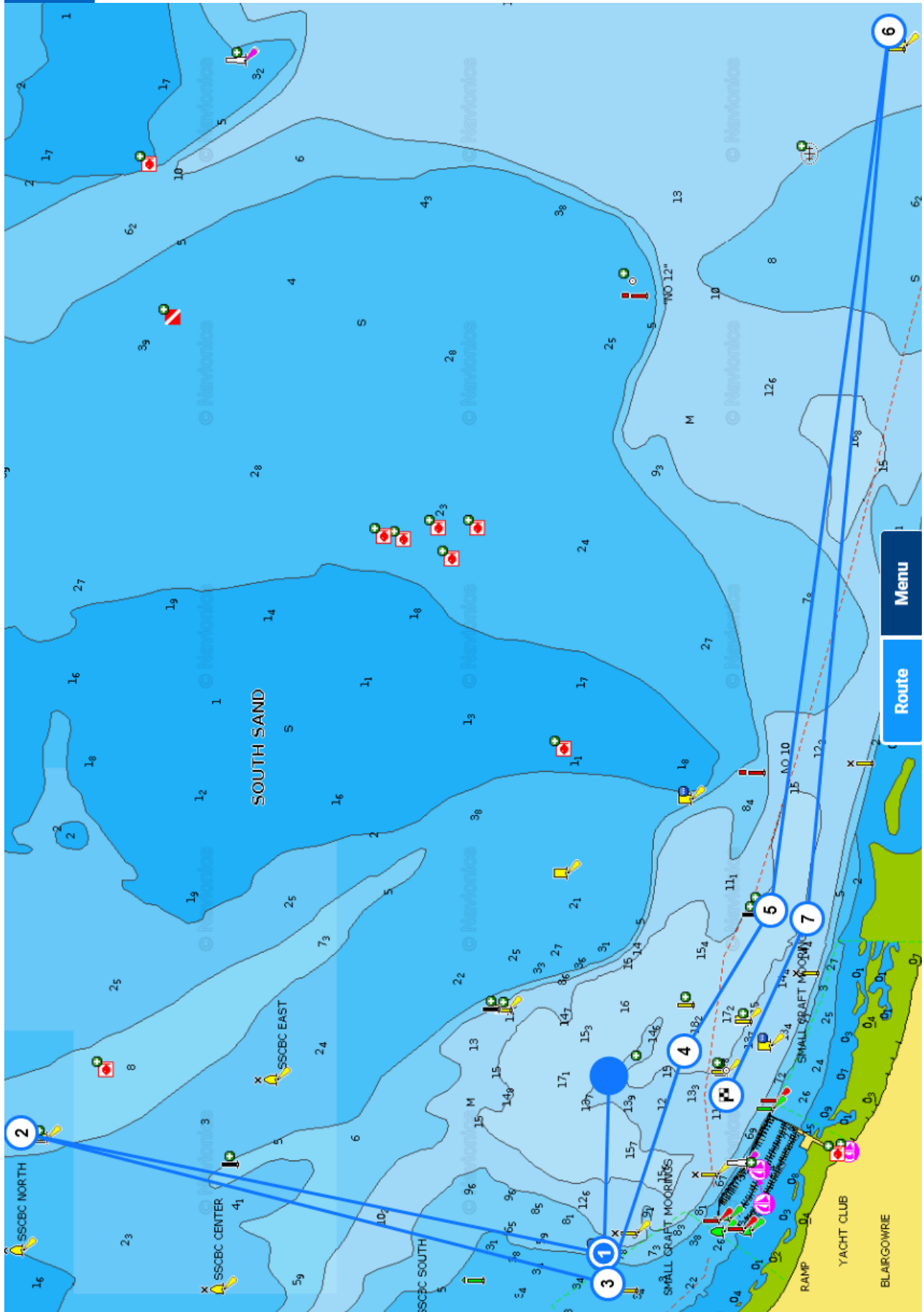
Course 29 – Short Course Approx. 13NM

Generally E/W Wind

COURSE MARK	MARK DESCRIPTION	REQUIRED SIDE
Start Area	On Water Start	
Turning Mark	Pink Inflatable Mark (refer SI 10.7 & 10.8)	** S or P
BYS 4	38°21.335'S, 144°46.985'E	Port
So.10 *	38°21.337'S 144°47.315'E	Port
BYS 5	38°21.610'S 144°49.130'E	Port
Rye Laid Mark	Orange Inflatable Mark located 1.0-1.5nm EAST of BY5 such that the bearing between BY5 & the Rye Laid Mark produces an approximately windward / leeward leg depending on wind direction.	Starboard
BYS 5	38°21.610'S 144°49.130'E	Starboard
Rye Laid Mark	Orange Inflatable Mark (refer above)	Starboard
BYS 5	38°21.610'S 144°49.130'E	Starboard
Rye Laid Mark	Orange Inflatable Mark (refer above)	Starboard
BYS 5	38°21.610'S 144°49.130'E	Starboard
So.10 *	38°21.337'S 144°47.315'E	Starboard
BYS 4 *	38°21.335'S, 144°46.985'E	Starboard
Petersville Finish Line	Finish in a westerly direction	

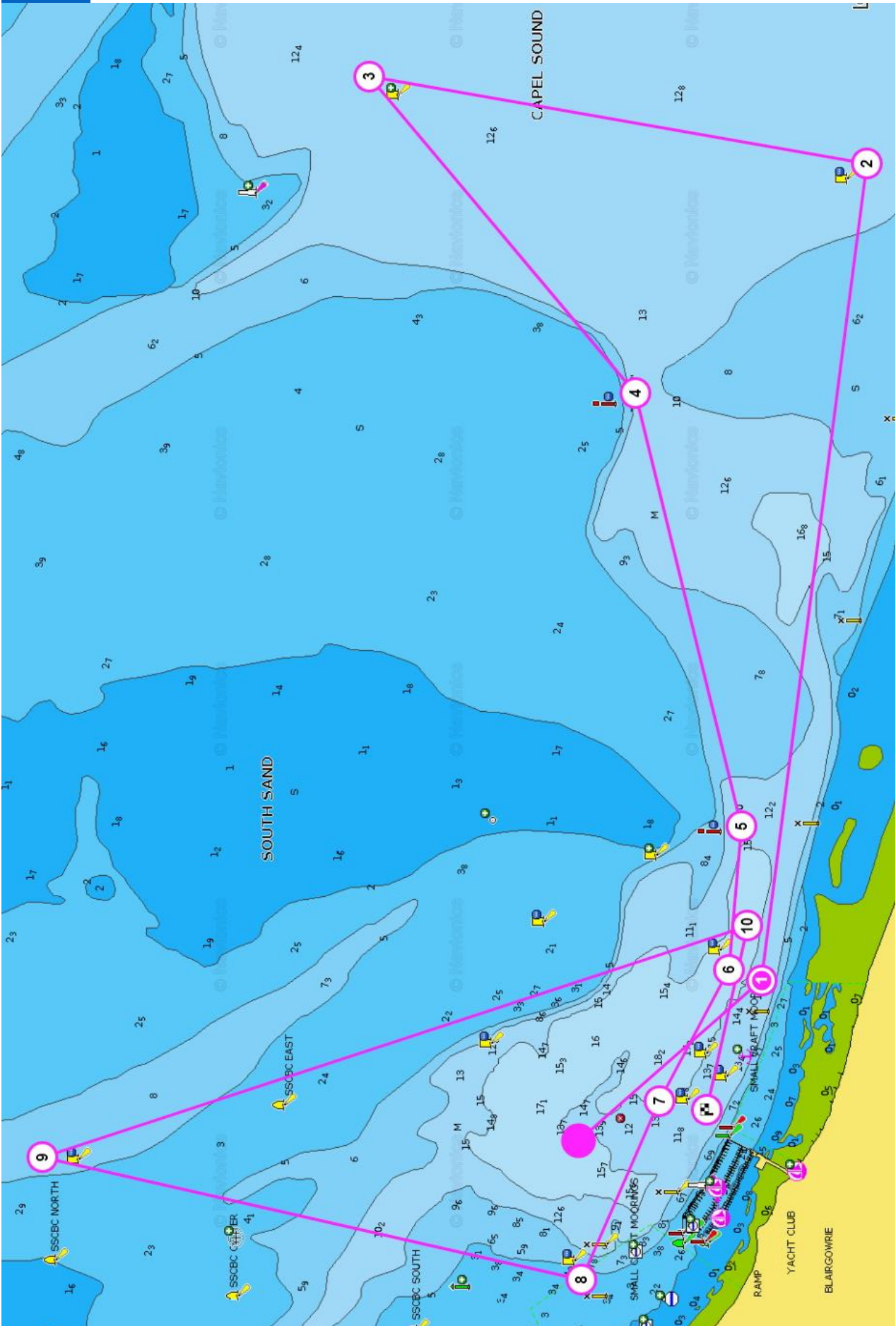
Course 30 Special Course - refer to official Notice Board

Course 2



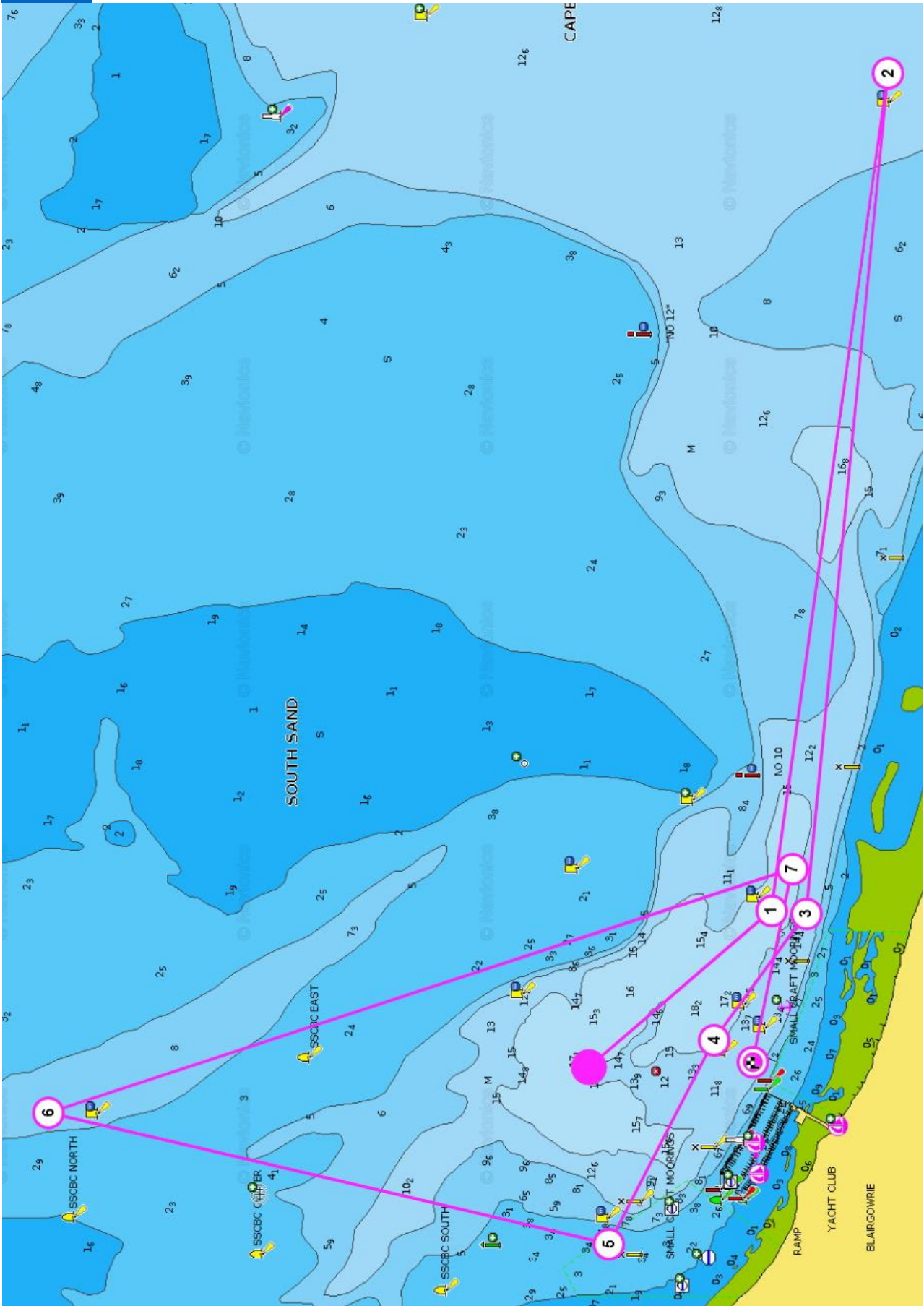
The circled number indicates the order in which the mark shall be passed or rounded.
 Petersville Regatta 2023 – Sailing Instructions, final

Course 3



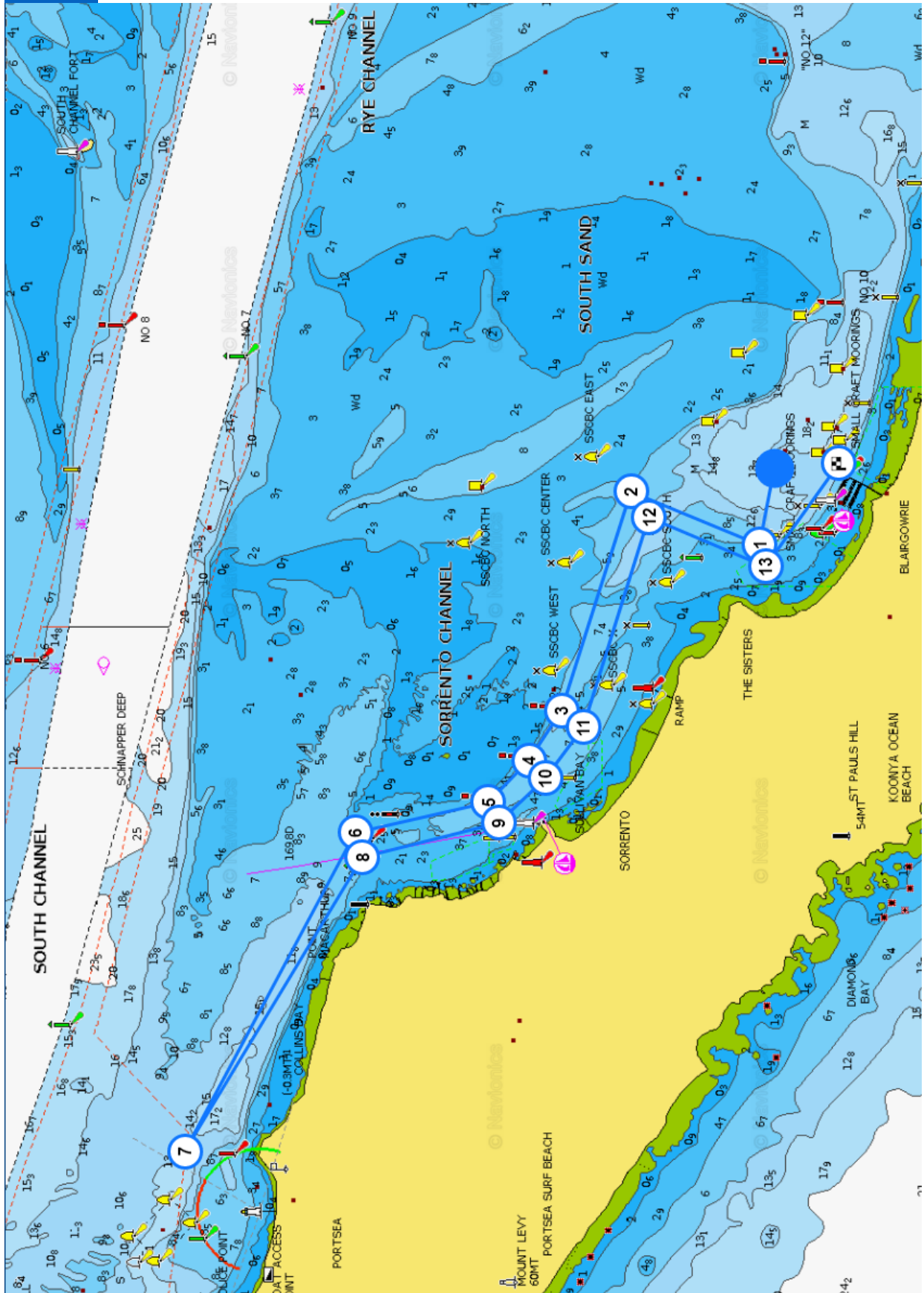
The circled number indicates the order in which the mark shall be passed or rounded.

Course 4

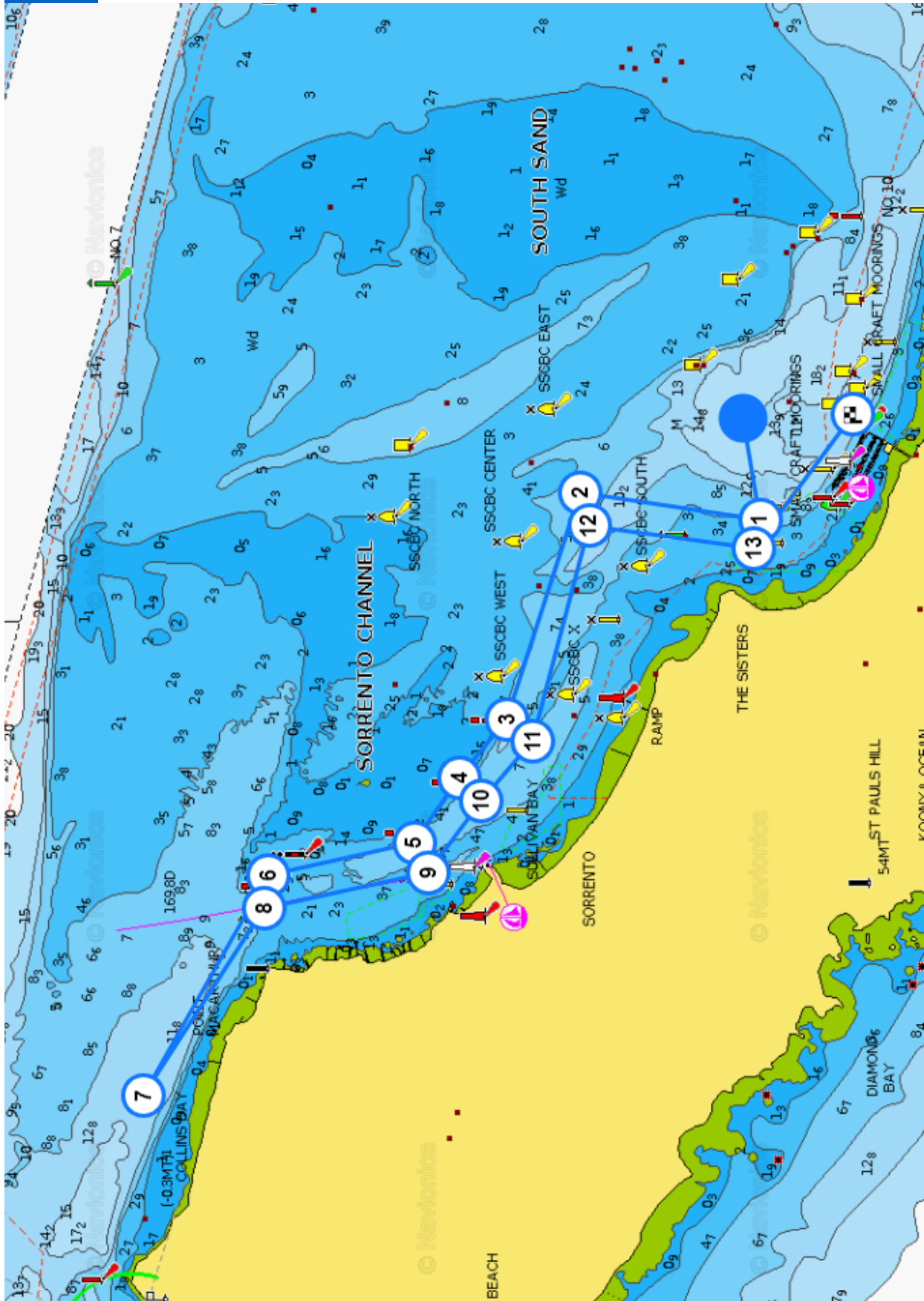


The circled number indicates the order in which the mark shall be passed or rounded.
Petersville Regatta 2023 – Sailing Instructions, final

Course 5

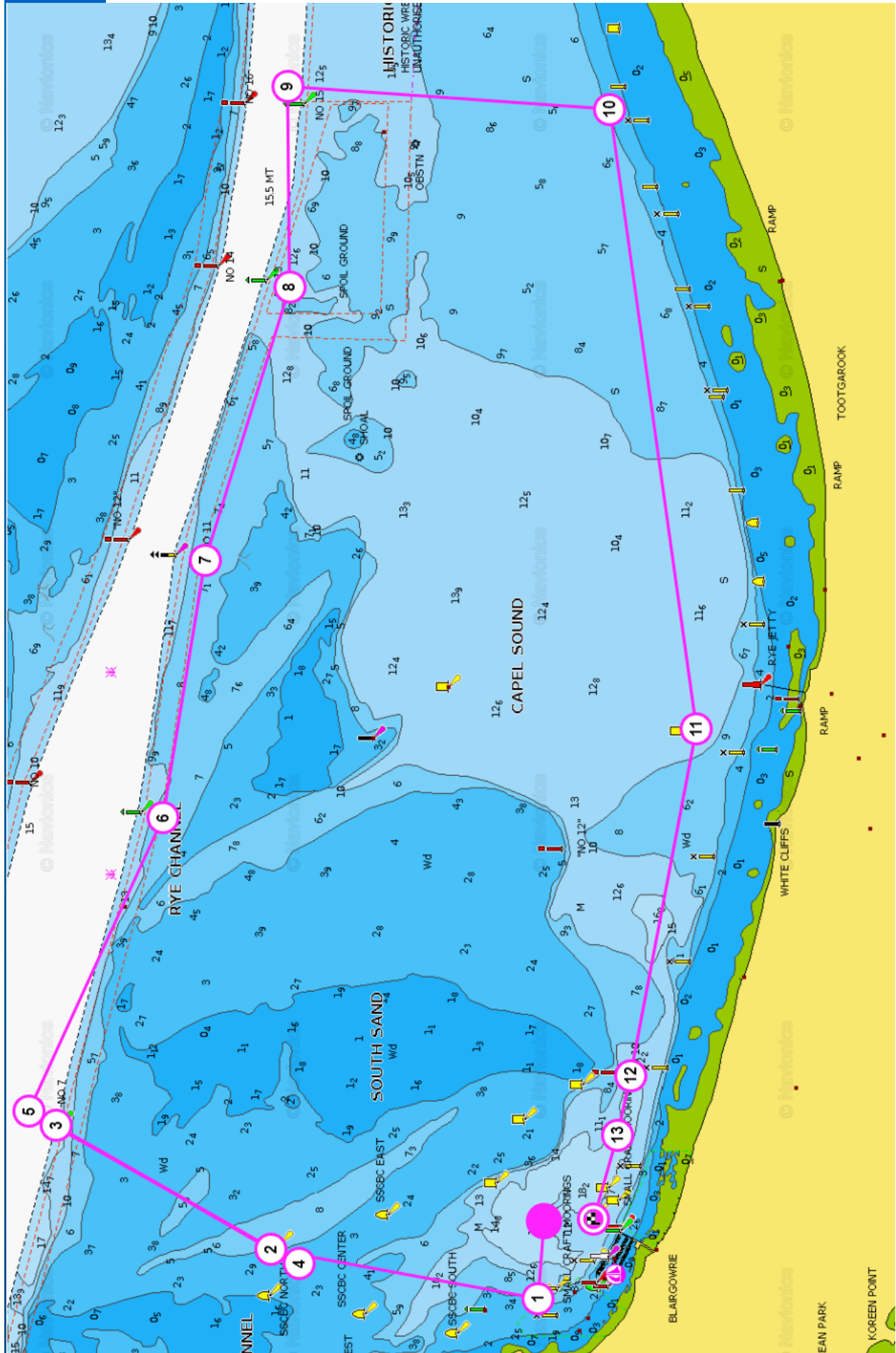


The circled number indicates the order in which the mark shall be passed or rounded.
 Petersville Regatta 2023 – Sailing Instructions, final



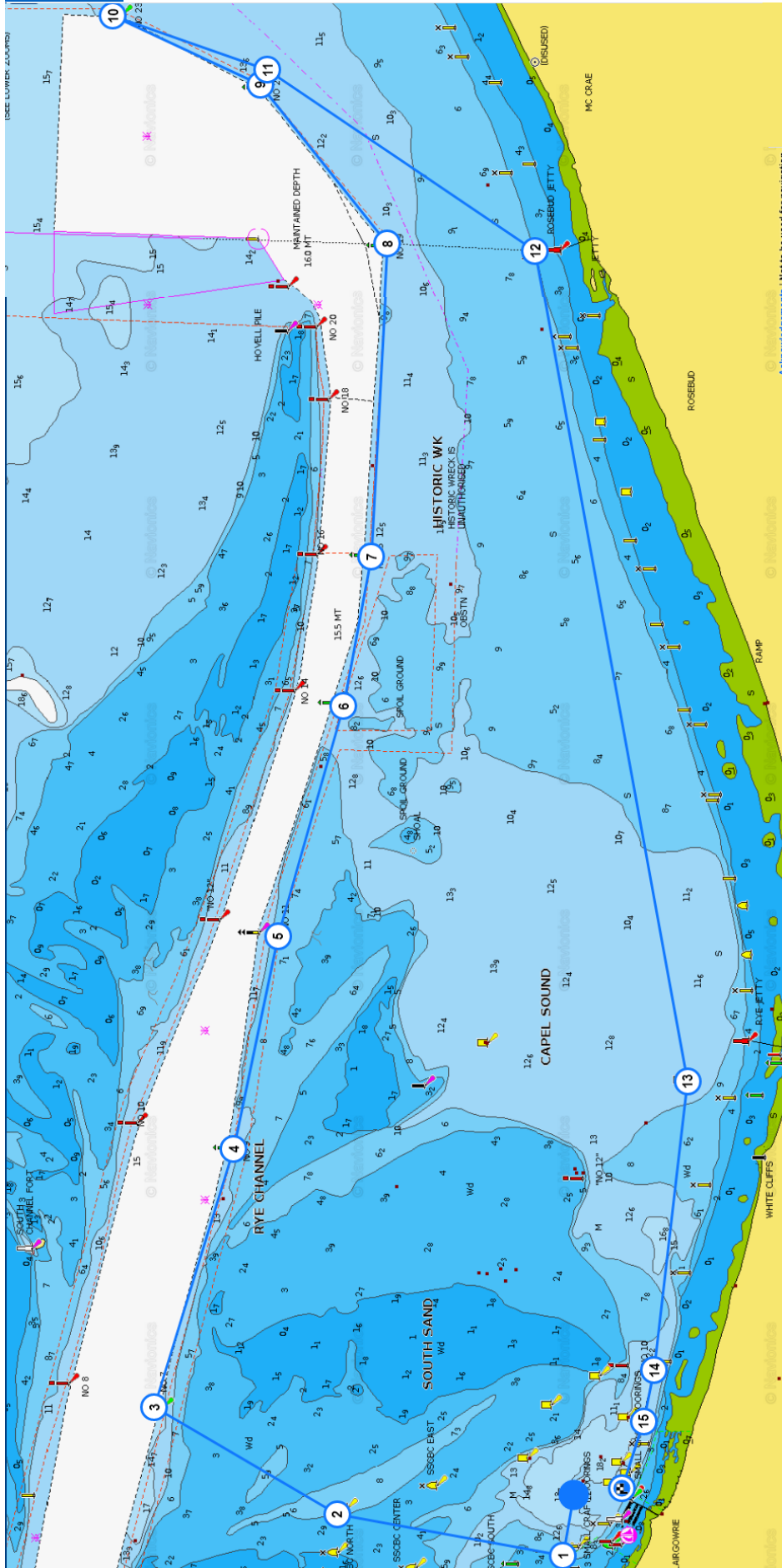
The circled number indicates the order in which the mark shall be passed or rounded.
 Petersville Regatta 2023 – Sailing Instructions, final

Course 10



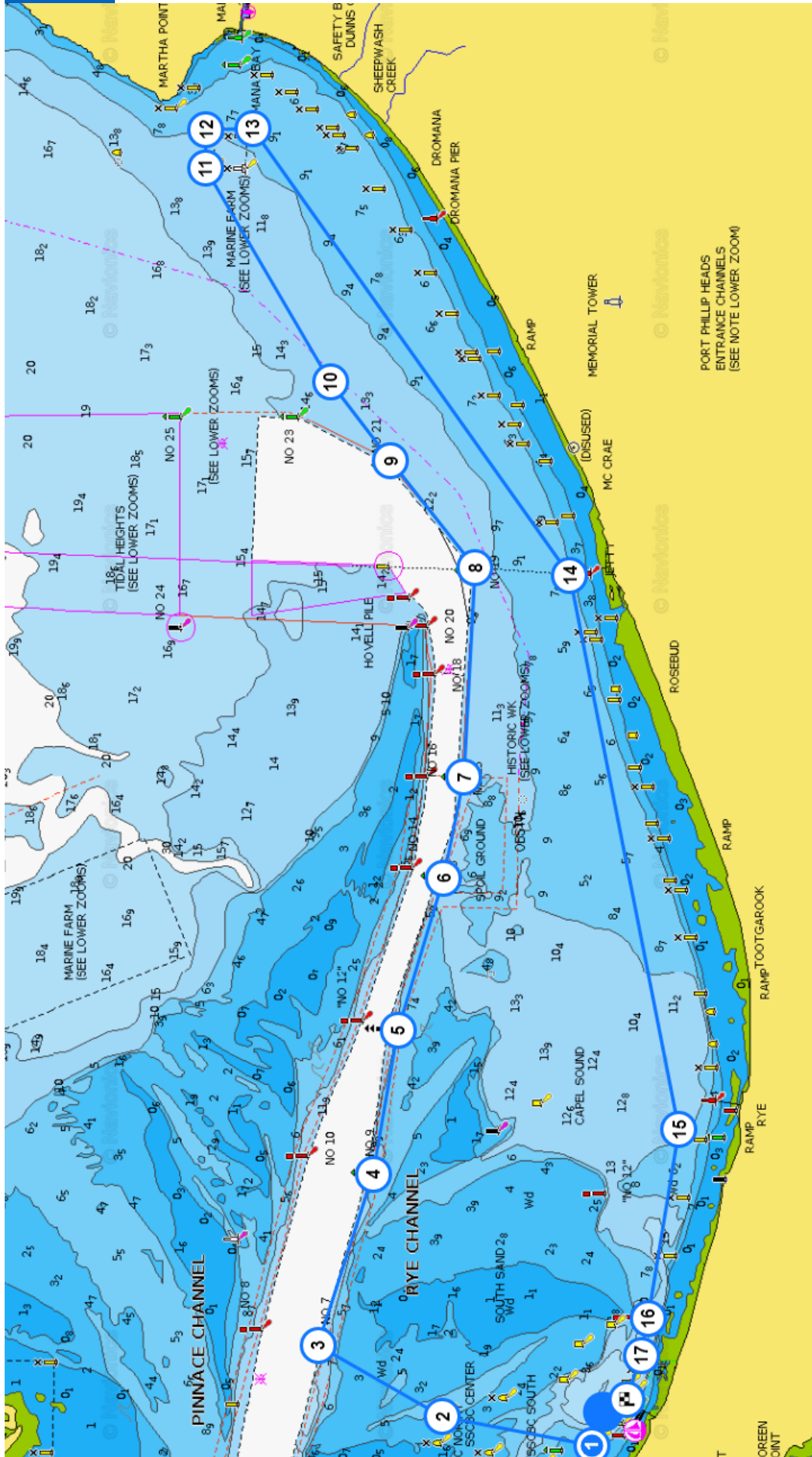
The circled number indicates the order in which the mark shall be passed or rounded.
 Petersville Regatta 2023 – Sailing Instructions, final

Course 11



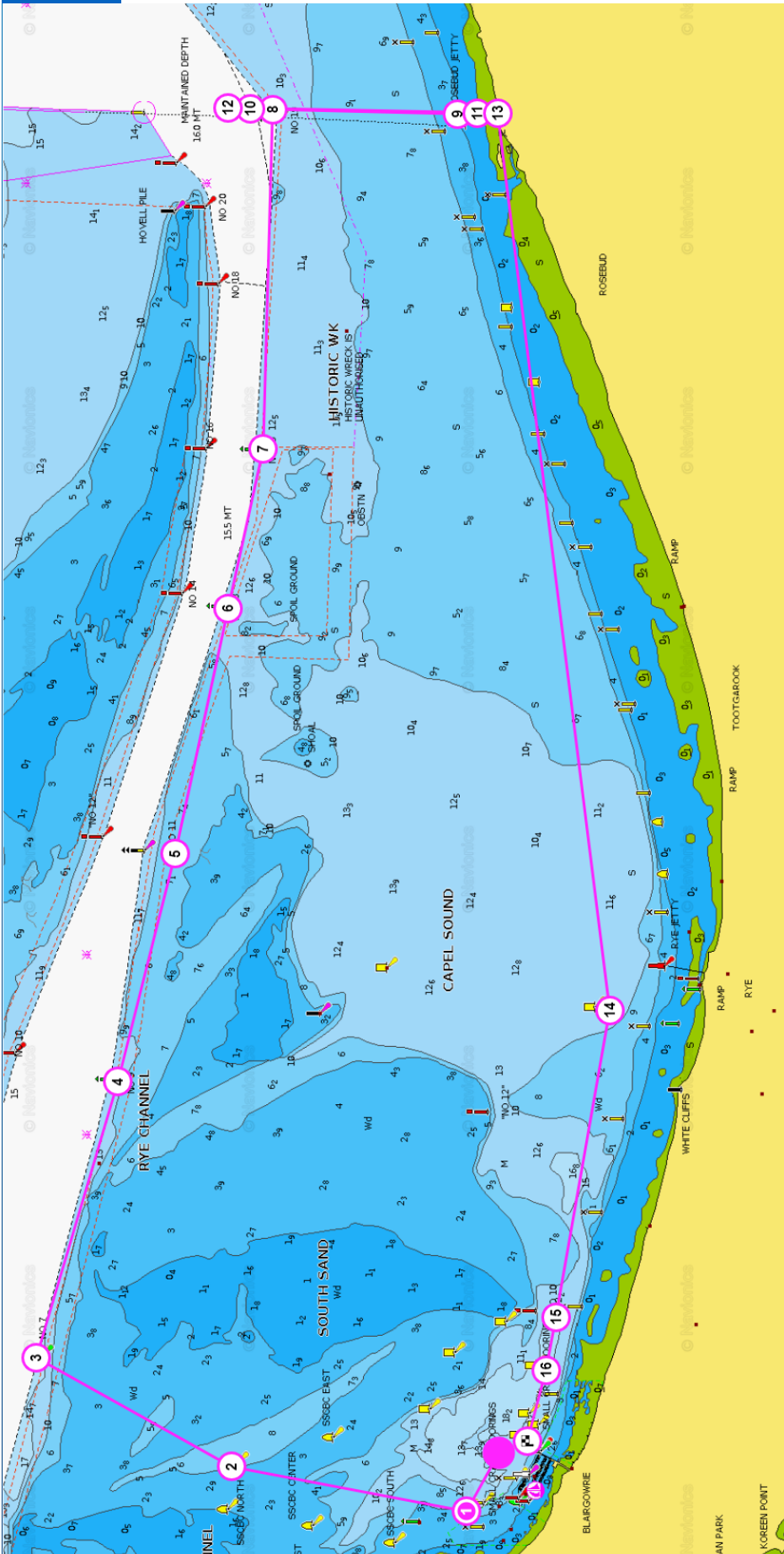
The circled number indicates the order in which the mark shall be passed or rounded.
 Petersville Regatta 2023 – Sailing Instructions, final

Course 12



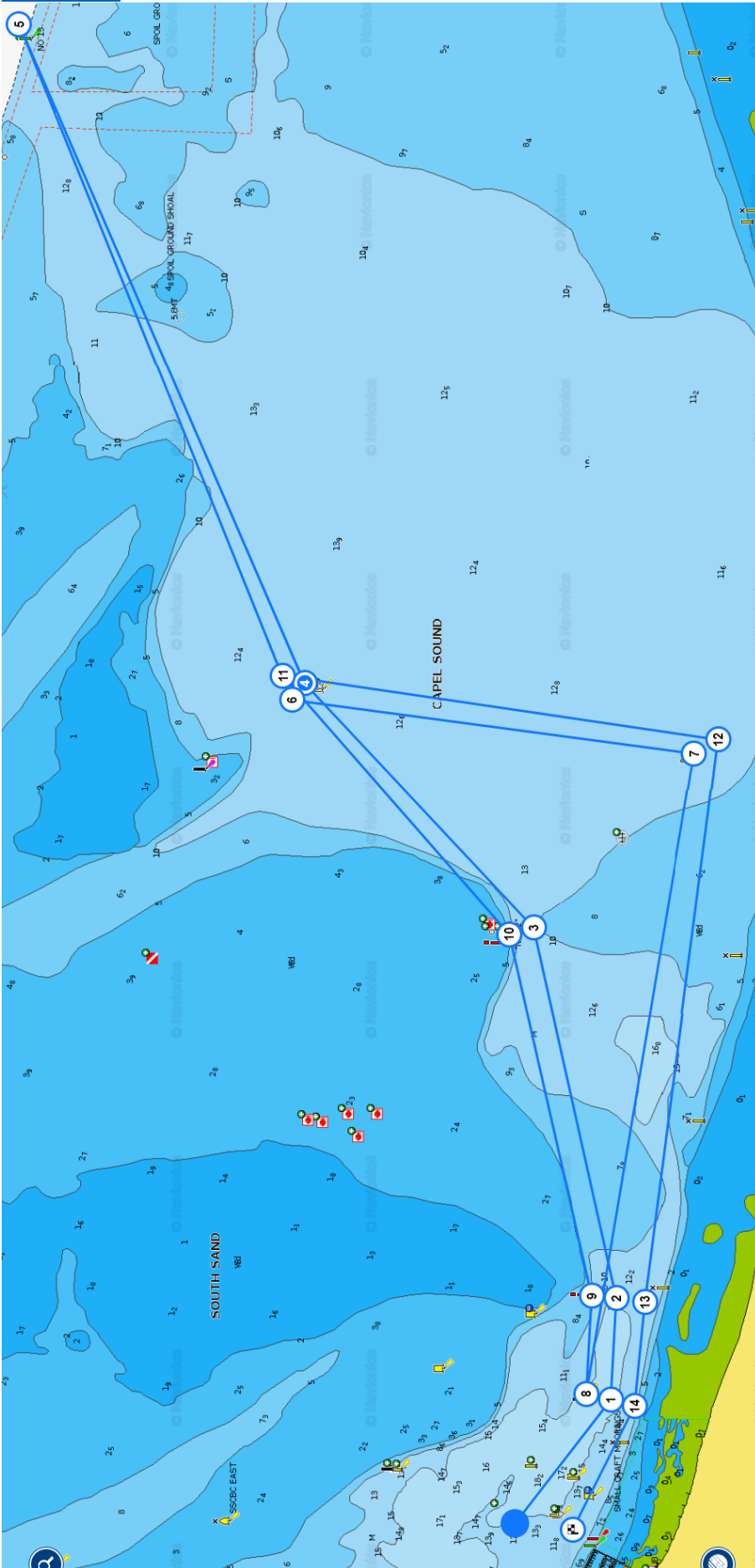
The circled number indicates the order in which the mark shall be passed or rounded.
 Petersville Regatta 2023 – Sailing Instructions, final

Course 14



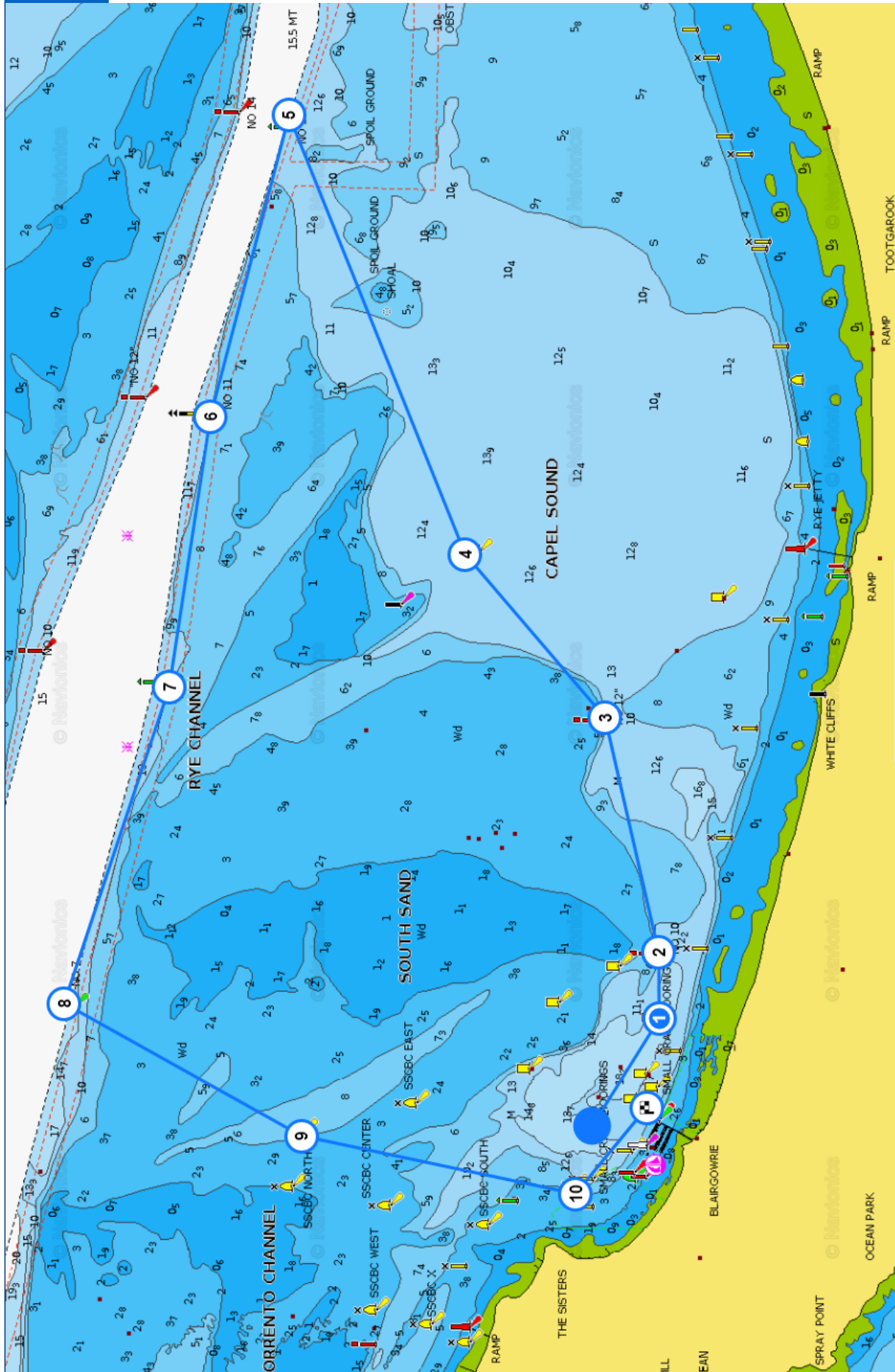
The circled number indicates the order in which the mark shall be passed or rounded.
 Petersville Regatta 2023 – Sailing Instructions, final

Course 21



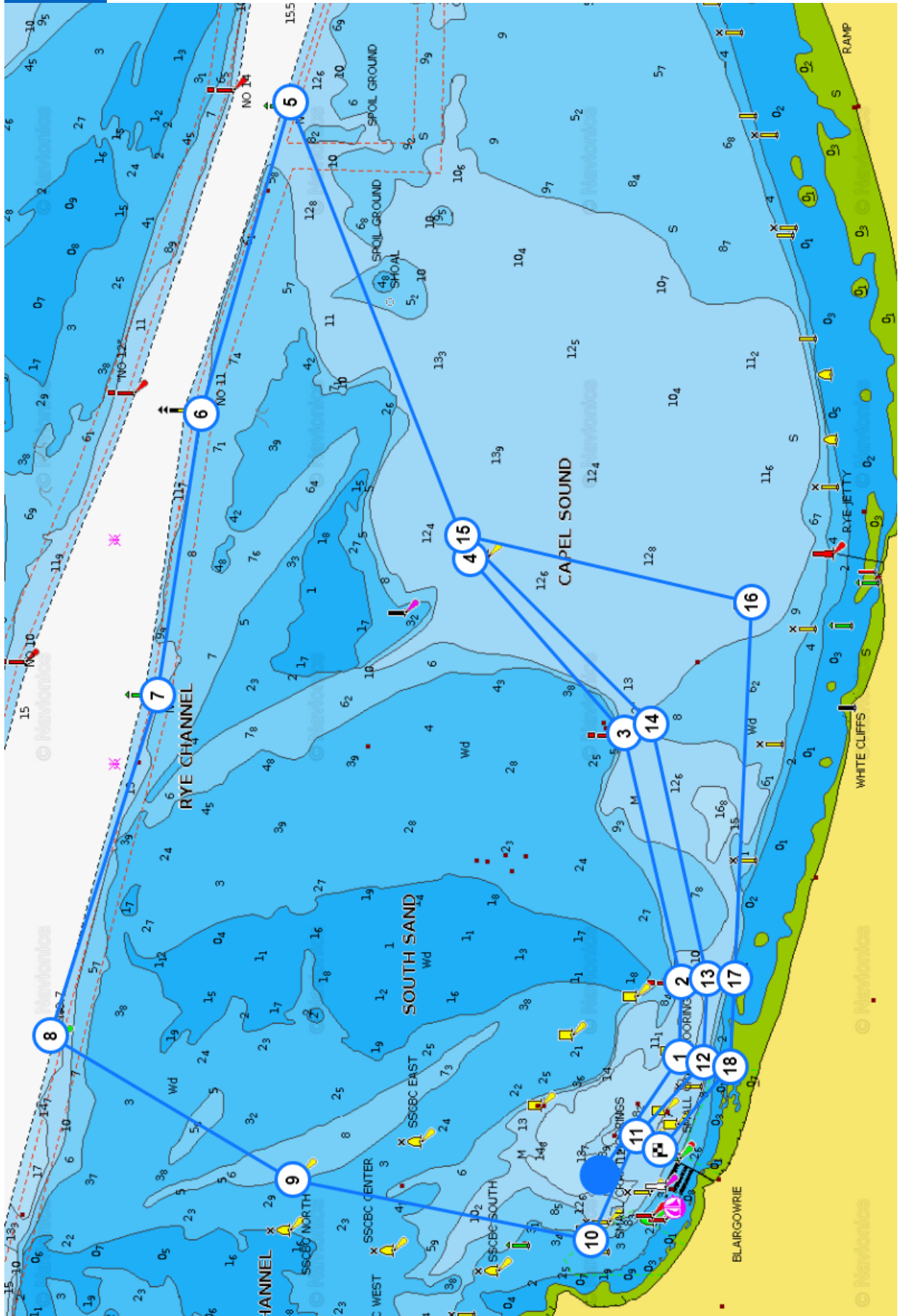
The circled number indicates the order in which the mark shall be passed or rounded.
Petersville Regatta 2023 – Sailing Instructions, final

Course 22

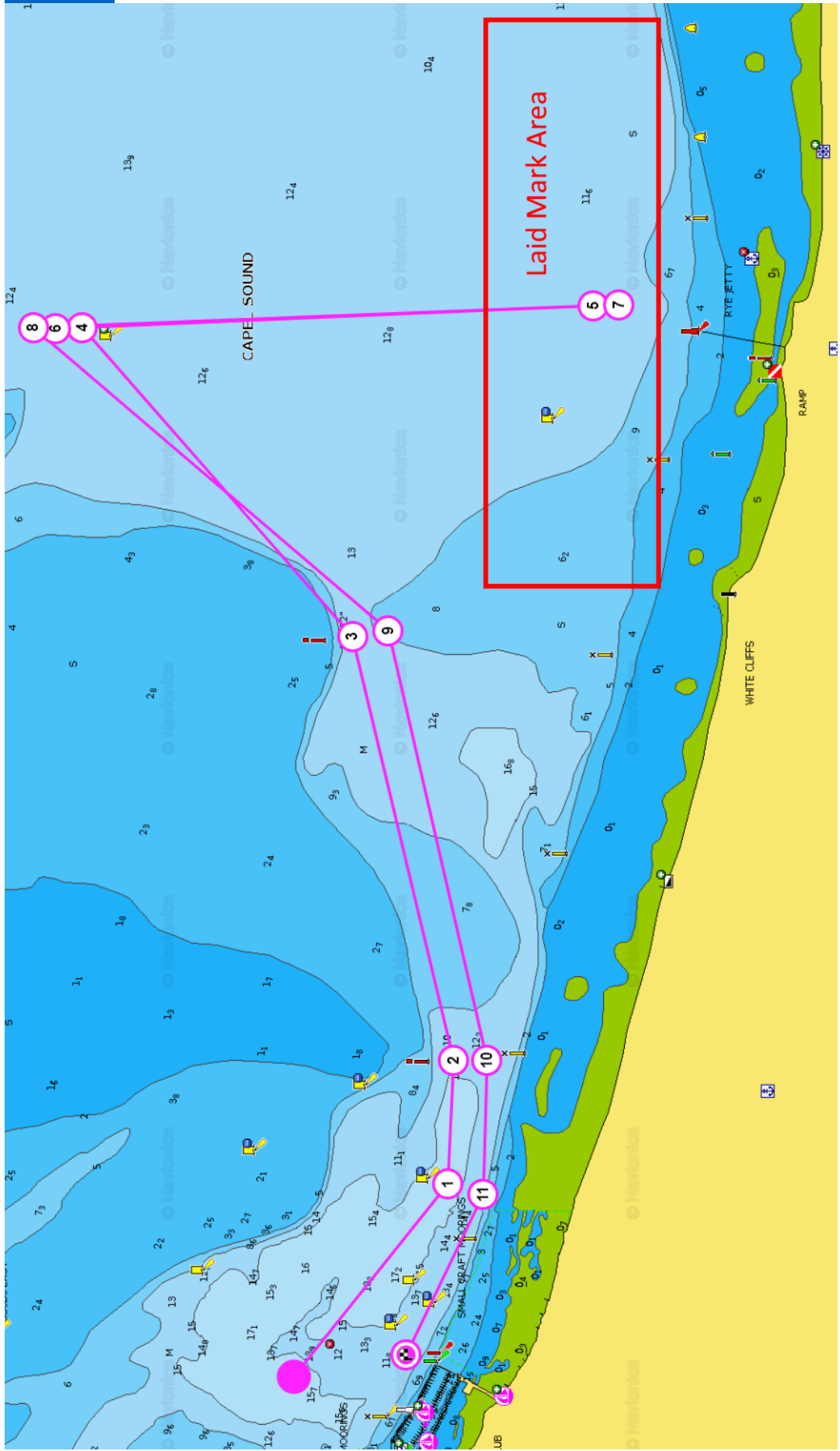


The circled number indicates the order in which the mark shall be passed or rounded.

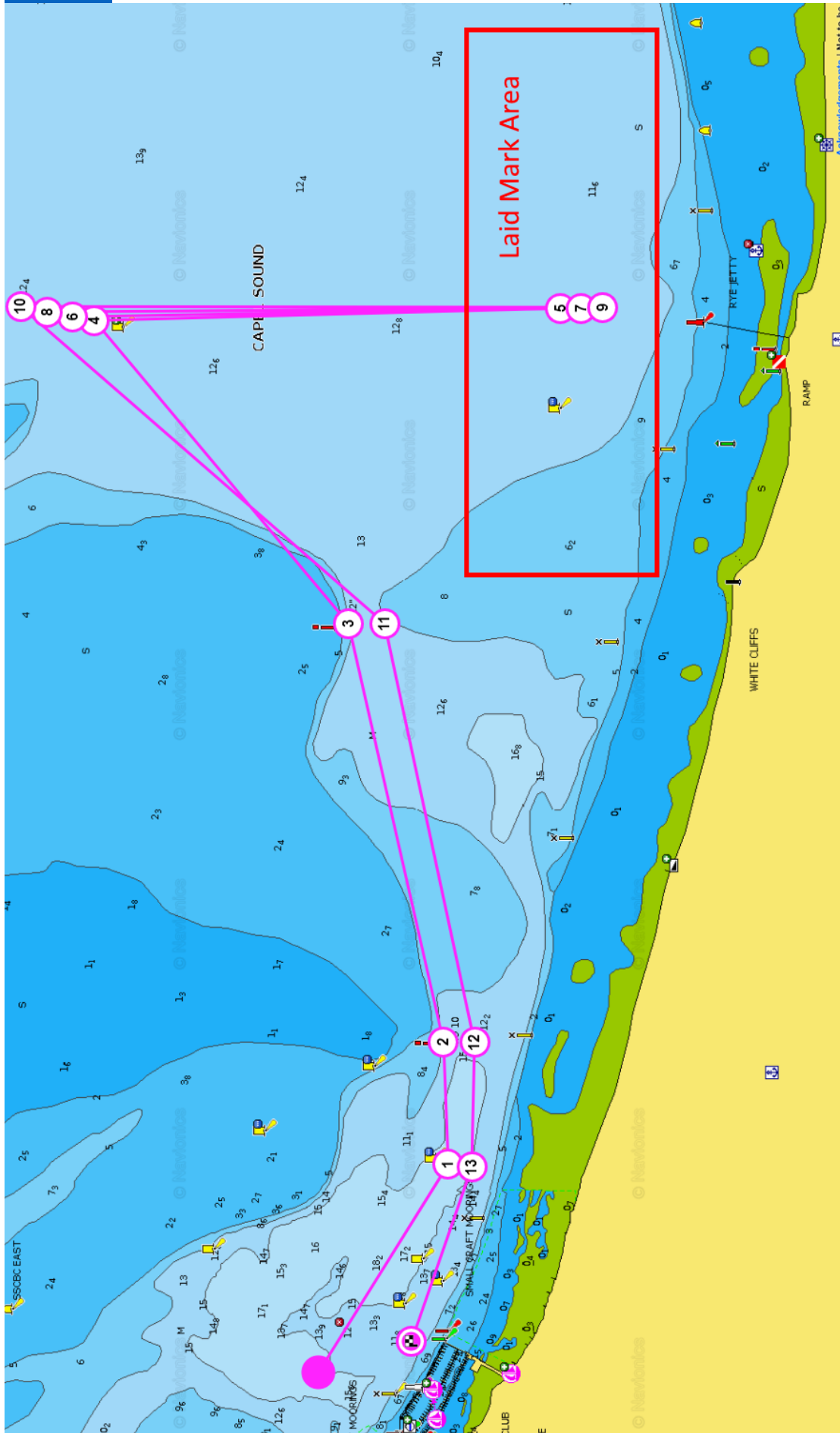
Course 23



The circled number indicates the order in which the mark shall be passed or rounded.
 Petersville Regatta 2023 – Sailing Instructions, final

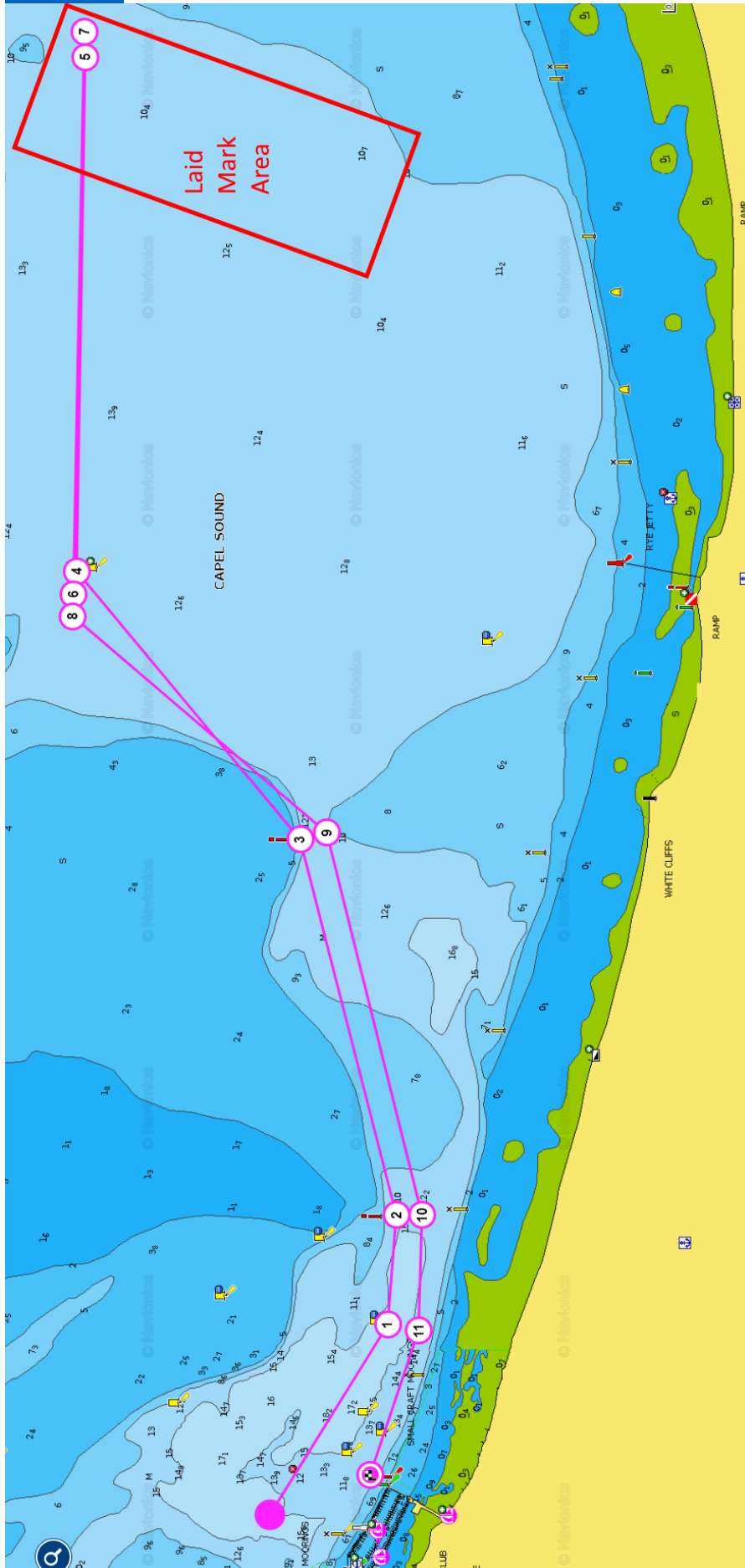


The circled number indicates the order in which the mark shall be passed or rounded.
Petersville Regatta 2023 – Sailing Instructions, final



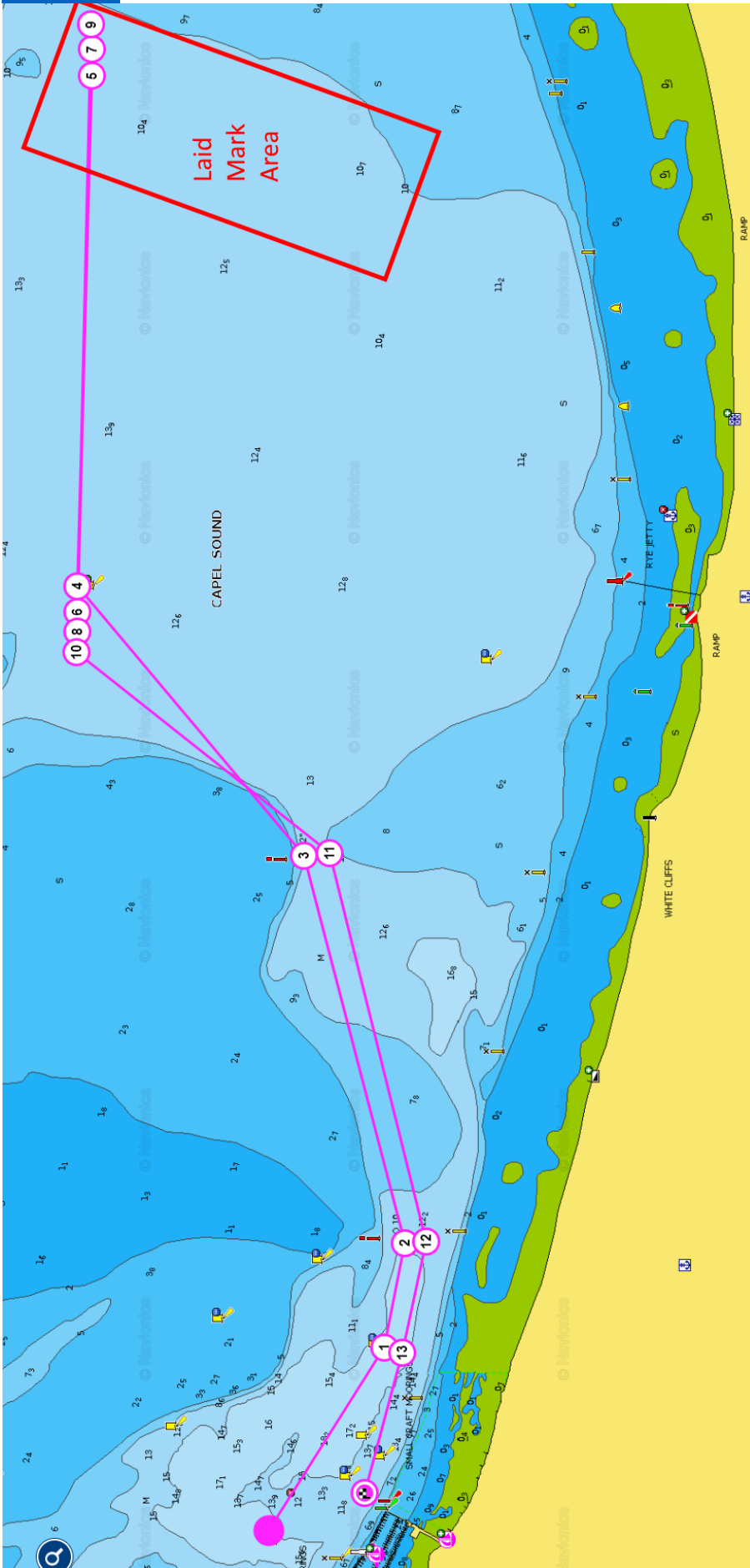
The circled number indicates the order in which the mark shall be passed or rounded.
 Petersville Regatta 2023 – Sailing Instructions, final

Course 26



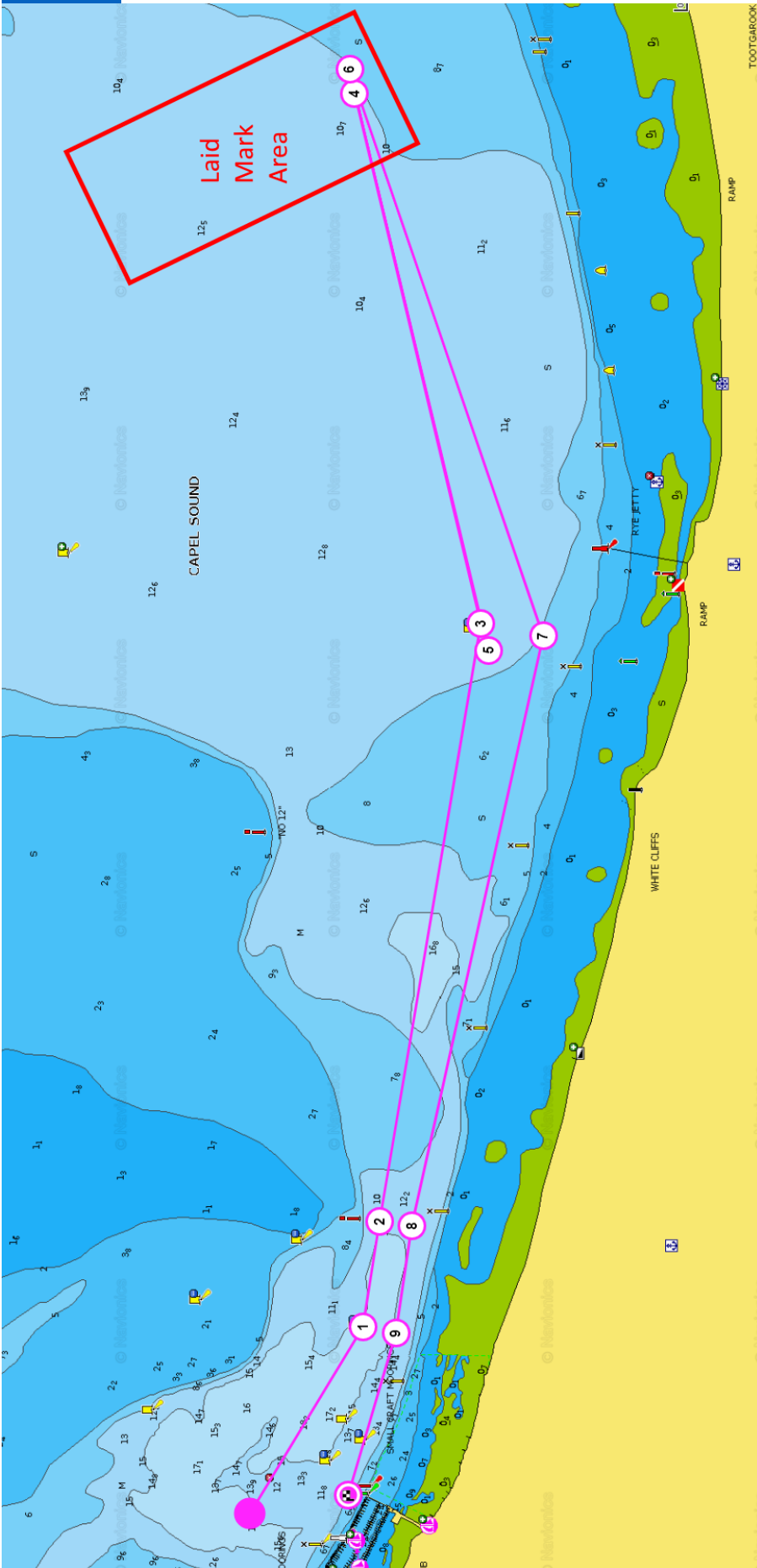
The circled number indicates the order in which the mark shall be passed or rounded.
 Petersville Regatta 2023 – Sailing Instructions, final

Course 27



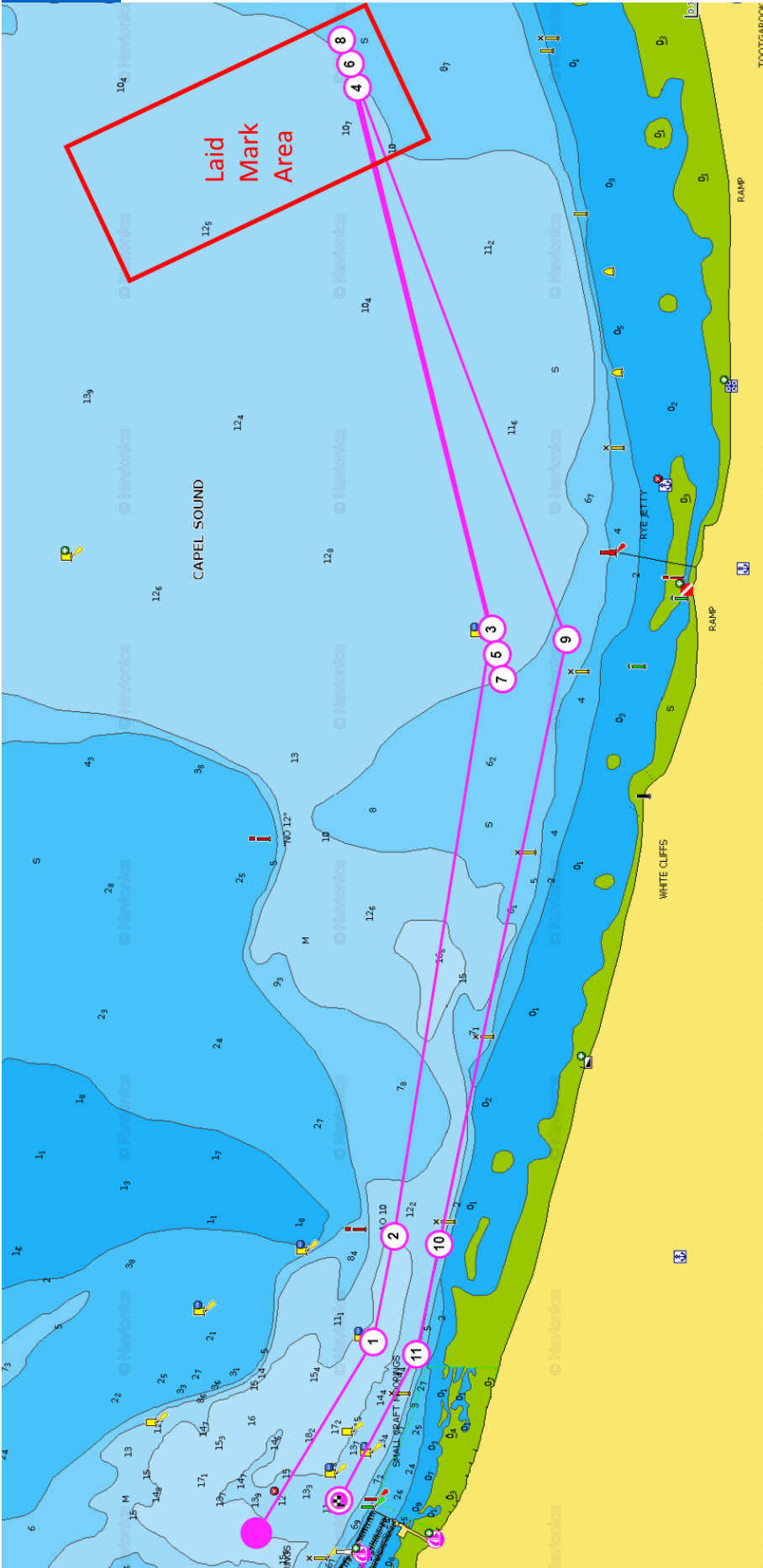
The circled number indicates the order in which the mark shall be passed or rounded.
 Petersville Regatta 2023 – Sailing Instructions, final

Course 28



The circled number indicates the order in which the mark shall be passed or rounded.
 Petersville Regatta 2023 – Sailing Instructions, final

Course 29



The circled number indicates the order in which the mark shall be passed or rounded.
 Petersville Regatta 2023 – Sailing Instructions, final